

Cathepsin S Rabbit mAb

Catalog # AP77894

Product Information

Application	WB, IHC-P, IF, ICC
Primary Accession	P25774
Reactivity	Human
Host	Rabbit
Clonality	Monoclonal Antibody
Isotype	IgG
Conjugate	Unconjugated
Immunogen	A synthesized peptide derived from human Cathepsin S
Purification	Affinity Chromatography
Calculated MW	37496

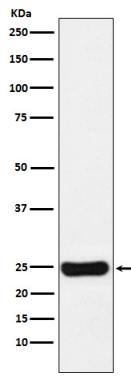
Additional Information

Gene ID	1520
Other Names	CTSS
Dilution	WB~~1/500-1/1000 IHC-P~~N/A IF~~1:50~200 ICC~~N/A
Format	Liquid in 10mM PBS, pH 7.4, 150mM sodium chloride, 0.05% BSA, 0.02% sodium azide and 50% glycerol.
Storage	Store at 4°C short term. Aliquot and store at -20°C long term. Avoid freeze/thaw cycles.

Protein Information

Name	CTSS
Function	Thiol protease (PubMed: 30612035). Key protease responsible for the removal of the invariant chain from MHC class II molecules and MHC class II antigen presentation (PubMed: 30612035). The bond- specificity of this proteinase is in part similar to the specificities of cathepsin L (PubMed: 30612035). Elicits itch by mediating cleavage and activation of MRGPRX1 (By similarity).
Cellular Location	Lysosome. Secreted. Cytoplasmic vesicle, phagosome

Images



Please note: All products are 'FOR RESEARCH USE ONLY. NOT FOR USE IN DIAGNOSTIC OR THERAPEUTIC PROCEDURES'.