

Hepatitis A Virus Cellular Receptor 1 Rabbit mAb

Catalog # AP77901

Product Information

Application	WB
Primary Accession	Q96D42
Reactivity	Rat, Human, Mouse
Host	Rabbit
Clonality	Monoclonal Antibody
Isotype	IgG
Conjugate	Unconjugated
Immunogen	A synthesized peptide derived from human TIM 1
Purification	Affinity Chromatography
Calculated MW	39250

Additional Information

Gene ID	26762
Other Names	HAVCR1
Dilution	WB~~1/500-1/1000
Format	Liquid in 10mM PBS, pH 7.4, 150mM sodium chloride, 0.05% BSA, 0.02% sodium azide and 50% glycerol.
Storage	Store at 4°C short term. Aliquot and store at -20°C long term. Avoid freeze/thaw cycles.

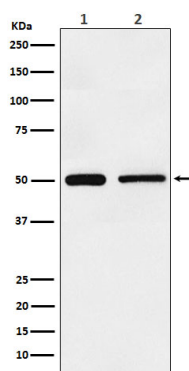
Protein Information

Name	HAVCR1
Synonyms	KIM1, TIM1, TIMD1
Function	Phosphatidylserine receptor that plays an important functional role in regulatory B-cells homeostasis including generation, expansion and suppressor functions (By similarity). As P- selectin/SELPLG ligand, plays a specialized role in activated but not naive T-cell trafficking during inflammatory responses (PubMed: 24703780). Controls thereby T-cell accumulation in the inflamed central nervous system (CNS) and the induction of autoimmune disease (PubMed: 24703780). Also regulates expression of various anti- inflammatory cytokines and co-inhibitory ligands including IL10 (By similarity). Acts as a regulator of T-cell proliferation (By similarity). May play a role in kidney injury and repair (PubMed: 17471468).
Cellular Location	Cell membrane; Single-pass type I membrane protein

Tissue Location

Widely expressed, with highest levels in kidney and testis. Expressed by activated CD4⁺ T-cells during the development of helper T-cells responses.

Images



Please note: All products are 'FOR RESEARCH USE ONLY. NOT FOR USE IN DIAGNOSTIC OR THERAPEUTIC PROCEDURES'.