

beta Defensin 1 Rabbit mAb

Catalog # AP77909

Product Information

Application	WB
Primary Accession	P60022
Reactivity	Human
Host	Rabbit
Clonality	Monoclonal Antibody
Isotype	IgG
Conjugate	Unconjugated
Immunogen	A synthesized peptide derived from human beta Defensin 1
Purification	Affinity Chromatography
Calculated MW	7420

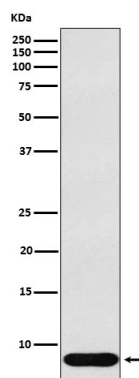
Additional Information

Gene ID	1672
Other Names	DEFB1
Dilution	WB~~1/500-1/1000
Format	Liquid in 10mM PBS, pH 7.4, 150mM sodium chloride, 0.05% BSA, 0.02% sodium azide and 50% glycerol.
Storage	Store at 4°C short term. Aliquot and store at -20°C long term. Avoid freeze/thaw cycles.

Protein Information

Name	DEFB1
Synonyms	BD1, HBD1
Function	Has bactericidal activity. May act as a ligand for C-C chemokine receptor CCR6. Positively regulates the sperm motility and bactericidal activity in a CCR6-dependent manner. Binds to CCR6 and triggers Ca ²⁺ mobilization in the sperm which is important for its motility (PubMed: 25122636).
Cellular Location	Secreted. Membrane. Note=Associates with tumor cell membrane-derived microvesicles (PubMed:23938203)
Tissue Location	Blood plasma. Sperm. Highly expressed in the lower head and midpiece of sperm. Significantly reduced levels found in the sperms of asthenozoospermia and leukocytospermia patients (at protein level).

Images



Please note: All products are 'FOR RESEARCH USE ONLY. NOT FOR USE IN DIAGNOSTIC OR THERAPEUTIC PROCEDURES'.