

# PFDN5 Rabbit mAb

Catalog # AP77932

## Product Information

---

<b>Application</b>	WB, IHC-P, IP
<b>Primary Accession</b>	<a href="#">Q99471</a>
<b>Reactivity</b>	Rat, Human, Mouse
<b>Host</b>	Rabbit
<b>Clonality</b>	Monoclonal Antibody
<b>Isotype</b>	IgG
<b>Conjugate</b>	Unconjugated
<b>Immunogen</b>	A synthesized peptide derived from human PFDN5
<b>Purification</b>	Affinity Chromatography
<b>Calculated MW</b>	17328

## Additional Information

---

<b>Gene ID</b>	5204
<b>Other Names</b>	PFDN5
<b>Dilution</b>	WB~~1/500-1/1000 IHC-P~~N/A IP~~N/A
<b>Format</b>	Liquid in 10mM PBS, pH 7.4, 150mM sodium chloride, 0.05% BSA, 0.02% sodium azide and 50% glycerol.
<b>Storage</b>	Store at 4°C short term. Aliquot and store at -20°C long term. Avoid freeze/thaw cycles.

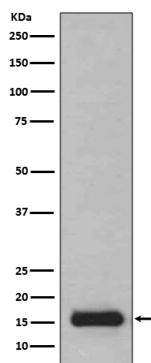
## Protein Information

---

<b>Name</b>	PFDN5
<b>Synonyms</b>	MM1, PFD5
<b>Function</b>	Binds specifically to cytosolic chaperonin (c-CPN) and transfers target proteins to it. Binds to nascent polypeptide chain and promotes folding in an environment in which there are many competing pathways for nonnative proteins. Represses the transcriptional activity of MYC.
<b>Cellular Location</b>	[Isoform 1]: Nucleus. [Isoform 3]: Nucleus.
<b>Tissue Location</b>	Highly expressed in pancreas and skeletal muscle and moderately in other tissues

## Images

---



Please note: All products are 'FOR RESEARCH USE ONLY. NOT FOR USE IN DIAGNOSTIC OR THERAPEUTIC PROCEDURES'.