

MMP17 Rabbit mAb

Catalog # AP77936

Product Information

| | |
|--------------------------|--|
| Application | WB, IHC-P, IF, ICC |
| Primary Accession | Q9ULZ9 |
| Reactivity | Rat, Human, Mouse |
| Host | Rabbit |
| Clonality | Monoclonal Antibody |
| Isotype | IgG |
| Conjugate | Unconjugated |
| Immunogen | A synthesized peptide derived from human MMP17 |
| Purification | Affinity Chromatography |
| Calculated MW | 66653 |

Additional Information

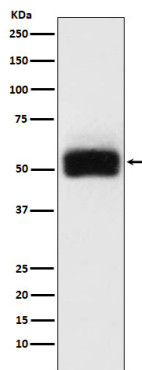
| | |
|--------------------|--|
| Gene ID | 4326 |
| Other Names | MMP17 |
| Dilution | WB~~1/500-1/1000 IHC-P~~N/A IF~~1:50~200 ICC~~N/A |
| Format | Liquid in 10mM PBS, pH 7.4, 150mM sodium chloride, 0.05% BSA, 0.02% sodium azide and 50% glycerol. |
| Storage | Store at 4°C short term. Aliquot and store at -20°C long term. Avoid freeze/thaw cycles. |

Protein Information

| | |
|--------------------------|--|
| Name | MMP17 |
| Synonyms | MT4MMP |
| Function | Endopeptidase that degrades various components of the extracellular matrix, such as fibrin. May be involved in the activation of membrane-bound precursors of growth factors or inflammatory mediators, such as tumor necrosis factor-alpha. May also be involved in tumoral process. Cleaves pro-TNF-alpha at the '74-Ala- -Gln-75' site. Not obvious if able to proteolytically activate progelatinase A. Does not hydrolyze collagen types I, II, III, IV and V, gelatin, fibronectin, laminin, decorin nor alpha1-antitrypsin. |
| Cellular Location | [Isoform Long]: Cell membrane; Lipid-anchor, GPI- anchor; Extracellular side. Secreted, extracellular space, extracellular matrix |
| Tissue Location | Expressed in brain, leukocytes, colon, ovary testis and breast cancer. |

Expressed also in many transformed and non- transformed cell types

Images



Please note: All products are 'FOR RESEARCH USE ONLY. NOT FOR USE IN DIAGNOSTIC OR THERAPEUTIC PROCEDURES'.