

RPS19 Rabbit mAb

Catalog # AP77945

Product Information

| | |
|--------------------------|--|
| Application | WB, IHC-P, IP |
| Primary Accession | P39019 |
| Reactivity | Rat, Human, Mouse |
| Host | Rabbit |
| Clonality | Monoclonal Antibody |
| Isotype | IgG |
| Conjugate | Unconjugated |
| Immunogen | A synthesized peptide derived from human RPS19 |
| Purification | Affinity Chromatography |
| Calculated MW | 16060 |

Additional Information

| | |
|--------------------|--|
| Gene ID | 6223 |
| Other Names | RPS19 |
| Dilution | WB~~1/500-1/1000 IHC-P~~N/A IP~~N/A |
| Format | Liquid in 10mM PBS, pH 7.4, 150mM sodium chloride, 0.05% BSA, 0.02% sodium azide and 50% glycerol. |
| Storage | Store at 4°C short term. Aliquot and store at -20°C long term. Avoid freeze/thaw cycles. |

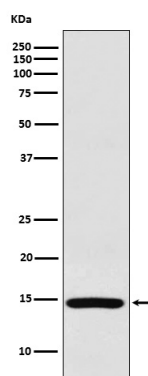
Protein Information

| | |
|--------------------------|--|
| Name | RPS19 (HGNC:10402) |
| Function | Component of the small ribosomal subunit (PubMed: 23636399). The ribosome is a large ribonucleoprotein complex responsible for the synthesis of proteins in the cell (PubMed: 23636399). Required for pre- rRNA processing and maturation of 40S ribosomal subunits (PubMed: 16990592). Part of the small subunit (SSU) processome, first precursor of the small eukaryotic ribosomal subunit. During the assembly of the SSU processome in the nucleolus, many ribosome biogenesis factors, an RNA chaperone and ribosomal proteins associate with the nascent pre-rRNA and work in concert to generate RNA folding, modifications, rearrangements and cleavage as well as targeted degradation of pre-ribosomal RNA by the RNA exosome (PubMed: 34516797). |
| Cellular Location | Cytoplasm. Nucleus, nucleolus |

Tissue Location

Higher level expression is seen in the colon carcinoma tissue than normal colon tissue

Images



Please note: All products are 'FOR RESEARCH USE ONLY. NOT FOR USE IN DIAGNOSTIC OR THERAPEUTIC PROCEDURES'.