

# PSME1 Rabbit mAb

Catalog # AP77951

## Product Information

---

<b>Application</b>	WB, IF, ICC, IP
<b>Primary Accession</b>	<a href="#">Q06323</a>
<b>Reactivity</b>	Rat, Human, Mouse
<b>Host</b>	Rabbit
<b>Clonality</b>	Monoclonal Antibody
<b>Isotype</b>	IgG
<b>Conjugate</b>	Unconjugated
<b>Immunogen</b>	A synthesized peptide derived from human PSME1
<b>Purification</b>	Affinity Chromatography
<b>Calculated MW</b>	29 KDa

## Additional Information

---

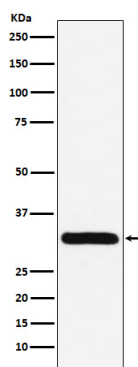
<b>Other Names</b>	PSME1
<b>Dilution</b>	WB~~1/500-1/1000 IF~~1:50~200 ICC~~N/A IP~~N/A
<b>Format</b>	Liquid in 10mM PBS, pH 7.4, 150mM sodium chloride, 0.05% BSA, 0.02% sodium azide and 50% glycerol.
<b>Storage</b>	Store at 4°C short term. Aliquot and store at -20°C long term. Avoid freeze/thaw cycles.

## Protein Information

---

## Images

---



Please note: All products are 'FOR RESEARCH USE ONLY. NOT FOR USE IN DIAGNOSTIC OR THERAPEUTIC PROCEDURES'.