

AMF Rabbit mAb

Catalog # AP77956

Product Information

Application	WB, IHC-P, IF, FC, ICC
Primary Accession	P06744
Reactivity	Human
Host	Rabbit
Clonality	Monoclonal Antibody
Isotype	IgG
Conjugate	Unconjugated
Immunogen	A synthesized peptide derived from human Glucose 6 phosphate isomerase
Purification	Affinity Chromatography
Calculated MW	63147

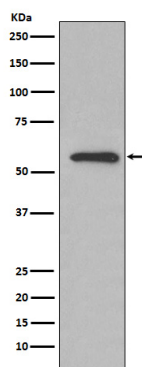
Additional Information

Gene ID	2821
Other Names	GPI
Dilution	WB~~1/500-1/1000 IHC-P~~N/A IF~~1:50~200 FC~~1:10~50 ICC~~N/A
Format	Liquid in 10mM PBS, pH 7.4, 150mM sodium chloride, 0.05% BSA, 0.02% sodium azide and 50% glycerol.
Storage	Store at 4°C short term. Aliquot and store at -20°C long term. Avoid freeze/thaw cycles.

Protein Information

Name	GPI {ECO:0000303 PubMed:2387591, ECO:0000312 HGNC:HGNC:4458}
Function	In the cytoplasm, catalyzes the conversion of glucose-6- phosphate to fructose-6-phosphate, the second step in glycolysis, and the reverse reaction during gluconeogenesis (PubMed: 28803808). Besides it's role as a glycolytic enzyme, also acts as a secreted cytokine: acts as an angiogenic factor (AMF) that stimulates endothelial cell motility (PubMed: 11437381). Acts as a neurotrophic factor, neuroleukin, for spinal and sensory neurons (PubMed: 11004567 , PubMed: 3352745). It is secreted by lectin-stimulated T-cells and induces immunoglobulin secretion (PubMed: 11004567 , PubMed: 3352745).
Cellular Location	Cytoplasm. Secreted

Images



Please note: All products are 'FOR RESEARCH USE ONLY. NOT FOR USE IN DIAGNOSTIC OR THERAPEUTIC PROCEDURES'.