

beta Casein Rabbit mAb

Catalog # AP77959

Product Information

Application	WB, IP
Primary Accession	P05814
Reactivity	Human
Host	Rabbit
Clonality	Monoclonal Antibody
Isotype	IgG
Conjugate	Unconjugated
Immunogen	A synthesized peptide derived from human beta Casein
Purification	Affinity Chromatography
Calculated MW	25382

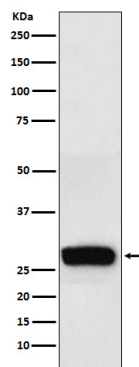
Additional Information

Gene ID	1447
Other Names	CSN2
Dilution	WB~~1/500-1/1000 IP~~N/A
Format	Liquid in 10mM PBS, pH 7.4, 150mM sodium chloride, 0.05% BSA, 0.02% sodium azide and 50% glycerol.
Storage	Store at 4°C short term. Aliquot and store at -20°C long term. Avoid freeze/thaw cycles.

Protein Information

Name	CSN2
Synonyms	CASB
Function	Important role in determination of the surface properties of the casein micelles.
Cellular Location	Secreted.
Tissue Location	Mammary gland specific. Secreted in milk.

Images



Please note: All products are 'FOR RESEARCH USE ONLY. NOT FOR USE IN DIAGNOSTIC OR THERAPEUTIC PROCEDURES'.