

eIF4A1 Rabbit mAb

Catalog # AP77980

Product Information

Application	WB, IF, FC, ICC
Primary Accession	P60842
Reactivity	Rat, Human, Mouse
Host	Rabbit
Clonality	Monoclonal Antibody
Isotype	IgG
Conjugate	Unconjugated
Immunogen	A synthesized peptide derived from human eIF4A1
Purification	Affinity Chromatography
Calculated MW	46154

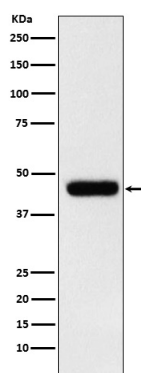
Additional Information

Gene ID	1973
Other Names	EIF4A1
Dilution	WB~~1/500-1/1000 IF~~1:50~200 FC~~1:10~50 ICC~~N/A
Format	Liquid in 10mM PBS, pH 7.4, 150mM sodium chloride, 0.05% BSA, 0.02% sodium azide and 50% glycerol.
Storage	Store at 4°C short term. Aliquot and store at -20°C long term. Avoid freeze/thaw cycles.

Protein Information

Name	EIF4A1
Synonyms	DDX2A, EIF4A
Function	ATP-dependent RNA helicase which is a subunit of the eIF4F complex involved in cap recognition and is required for mRNA binding to ribosome (PubMed: 20156963). In the current model of translation initiation, eIF4A unwinds RNA secondary structures in the 5'-UTR of mRNAs which is necessary to allow efficient binding of the small ribosomal subunit, and subsequent scanning for the initiator codon. As a result, promotes cell proliferation and growth (PubMed: 20156963).
Cellular Location	Cytoplasm, perinuclear region. Cell membrane. Cytoplasm, Stress granule. Note=Colocalizes with PKP1 in stress granules following arsenate or hydrogen peroxide treatment

Images



Please note: All products are 'FOR RESEARCH USE ONLY. NOT FOR USE IN DIAGNOSTIC OR THERAPEUTIC PROCEDURES'.