

Syntrophin alpha 1 Rabbit mAb

Catalog # AP77981

Product Information

Application	WB, IHC-P, IF, FC, ICC
Primary Accession	Q13424
Reactivity	Human, Mouse
Host	Rabbit
Clonality	Monoclonal Antibody
Isotype	IgG
Conjugate	Unconjugated
Immunogen	A synthesized peptide derived from human Syntrophin alpha 1
Purification	Affinity Chromatography
Calculated MW	53895

Additional Information

Gene ID	6640
Other Names	SNTA1
Dilution	WB~~1/500-1/1000 IHC-P~~N/A IF~~1:50~200 FC~~1:10~50 ICC~~N/A
Format	Liquid in 10mM PBS, pH 7.4, 150mM sodium chloride, 0.05% BSA, 0.02% sodium azide and 50% glycerol.
Storage	Store at 4°C short term. Aliquot and store at -20°C long term. Avoid freeze/thaw cycles.

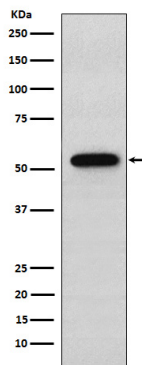
Protein Information

Name	SNTA1
Synonyms	SNT1
Function	Adapter protein that binds to and probably organizes the subcellular localization of a variety of membrane proteins. May link various receptors to the actin cytoskeleton and the extracellular matrix via the dystrophin glycoprotein complex. Plays an important role in synapse formation and in the organization of UTRN and acetylcholine receptors at the neuromuscular synapse. Binds to phosphatidylinositol 4,5-bisphosphate (By similarity).
Cellular Location	Cell membrane, sarcolemma; Peripheral membrane protein; Cytoplasmic side. Cell junction. Cytoplasm, cytoskeleton. Note=In skeletal muscle, it localizes at the cytoplasmic side of the sarcolemmal membrane and at neuromuscular junctions

Tissue Location

High expression in skeletal muscle and heart. Low expression in brain, pancreas, liver, kidney and lung. Not detected in placenta

Images



Please note: All products are 'FOR RESEARCH USE ONLY. NOT FOR USE IN DIAGNOSTIC OR THERAPEUTIC PROCEDURES'.