

S6K2 Rabbit mAb

Catalog # AP77983

Product Information

Application	WB, IHC-P, IF, FC, ICC
Primary Accession	Q9UBS0
Reactivity	Rat, Human, Mouse
Host	Rabbit
Clonality	Monoclonal Antibody
Isotype	IgG
Conjugate	Unconjugated
Immunogen	A synthesized peptide derived from human P70 S6 Kinase beta
Purification	Affinity Chromatography
Calculated MW	53455

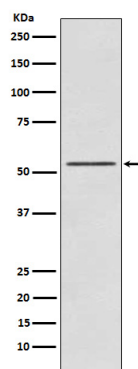
Additional Information

Gene ID	6199
Other Names	RPS6KB2
Dilution	WB~~1/500-1/1000 IHC-P~~N/A IF~~1:50~200 FC~~1:10~50 ICC~~N/A
Format	Liquid in 10mM PBS, pH 7.4, 150mM sodium chloride, 0.05% BSA, 0.02% sodium azide and 50% glycerol.
Storage	Store at 4°C short term. Aliquot and store at -20°C long term. Avoid freeze/thaw cycles.

Protein Information

Name	RPS6KB2
Synonyms	STK14B
Function	Phosphorylates specifically ribosomal protein S6 (PubMed: 29750193). Seems to act downstream of mTOR signaling in response to growth factors and nutrients to promote cell proliferation, cell growth and cell cycle progression in an alternative pathway regulated by MEAK7 (PubMed: 29750193).
Cellular Location	Cytoplasm. Nucleus.

Images



Please note: All products are 'FOR RESEARCH USE ONLY. NOT FOR USE IN DIAGNOSTIC OR THERAPEUTIC PROCEDURES'.