

PON2 Rabbit mAb

Catalog # AP77988

Product Information

Application	WB, IHC-P, IP
Primary Accession	Q15165
Reactivity	Rat, Human, Mouse
Host	Rabbit
Clonality	Monoclonal Antibody
Isotype	IgG
Conjugate	Unconjugated
Immunogen	A synthesized peptide derived from human PON2
Purification	Affinity Chromatography
Calculated MW	39381

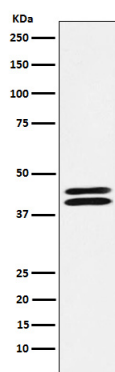
Additional Information

Gene ID	5445
Other Names	PON2
Dilution	WB~~1/500-1/1000 IHC-P~~N/A IP~~N/A
Format	Liquid in 10mM PBS, pH 7.4, 150mM sodium chloride, 0.05% BSA, 0.02% sodium azide and 50% glycerol.
Storage	Store at 4°C short term. Aliquot and store at -20°C long term. Avoid freeze/thaw cycles.

Protein Information

Name	PON2
Function	Capable of hydrolyzing lactones and a number of aromatic carboxylic acid esters. Has antioxidant activity. Is not associated with high density lipoprotein. Prevents LDL lipid peroxidation, reverses the oxidation of mildly oxidized LDL, and inhibits the ability of MM-LDL to induce monocyte chemotaxis.
Cellular Location	Membrane; Peripheral membrane protein
Tissue Location	Widely expressed with highest expression in liver, lung, placenta, testis and heart.

Images



Please note: All products are 'FOR RESEARCH USE ONLY. NOT FOR USE IN DIAGNOSTIC OR THERAPEUTIC PROCEDURES'.