

# Transferrin Receptor 2 Rabbit mAb

Catalog # AP77989

## Product Information

---

<b>Application</b>	WB, IHC-P
<b>Primary Accession</b>	<a href="#">Q9UP52</a>
<b>Reactivity</b>	Human
<b>Host</b>	Rabbit
<b>Clonality</b>	Monoclonal Antibody
<b>Isotype</b>	IgG
<b>Conjugate</b>	Unconjugated
<b>Immunogen</b>	A synthesized peptide derived from human Transferrin Receptor 2
<b>Purification</b>	Affinity Chromatography
<b>Calculated MW</b>	88755

## Additional Information

---

<b>Gene ID</b>	7036
<b>Other Names</b>	TFR2
<b>Dilution</b>	WB~~1/500-1/1000 IHC-P~~N/A
<b>Format</b>	Liquid in 10mM PBS, pH 7.4, 150mM sodium chloride, 0.05% BSA, 0.02% sodium azide and 50% glycerol.
<b>Storage</b>	Store at 4°C short term. Aliquot and store at -20°C long term. Avoid freeze/thaw cycles.

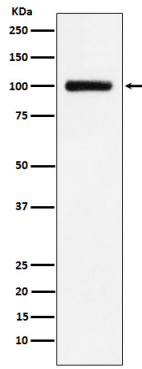
## Protein Information

---

<b>Name</b>	TFR2
<b>Function</b>	Mediates cellular uptake of transferrin-bound iron in a non- iron dependent manner. May be involved in iron metabolism, hepatocyte function and erythrocyte differentiation.
<b>Cellular Location</b>	Cell membrane; Single-pass type II membrane protein
<b>Tissue Location</b>	Predominantly expressed in liver. While the alpha form is also expressed in spleen, lung, muscle, prostate and peripheral blood mononuclear cells, the beta form is expressed in all tissues tested, albeit weakly

## Images

---



Please note: All products are 'FOR RESEARCH USE ONLY. NOT FOR USE IN DIAGNOSTIC OR THERAPEUTIC PROCEDURES'.