

# SAE1 Rabbit mAb

Catalog # AP77990

## Product Information

---

<b>Application</b>	WB, IF, FC, ICC, IP
<b>Primary Accession</b>	<a href="#">Q9UBE0</a>
<b>Reactivity</b>	Rat, Human
<b>Host</b>	Rabbit
<b>Clonality</b>	Monoclonal Antibody
<b>Isotype</b>	IgG
<b>Conjugate</b>	Unconjugated
<b>Immunogen</b>	A synthesized peptide derived from human SAE1
<b>Purification</b>	Affinity Chromatography
<b>Calculated MW</b>	38450

## Additional Information

---

<b>Gene ID</b>	10055
<b>Other Names</b>	SAE1
<b>Dilution</b>	WB~~1/500-1/1000 IF~~1:50~200 FC~~1:10~50 ICC~~N/A IP~~N/A
<b>Format</b>	Liquid in 10mM PBS, pH 7.4, 150mM sodium chloride, 0.05% BSA, 0.02% sodium azide and 50% glycerol.
<b>Storage</b>	Store at 4°C short term. Aliquot and store at -20°C long term. Avoid freeze/thaw cycles.

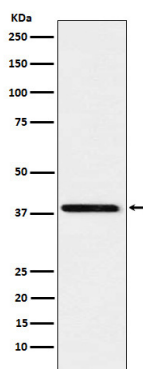
## Protein Information

---

<b>Name</b>	SAE1
<b>Synonyms</b>	AOS1, SUA1, UBLE1A
<b>Function</b>	The heterodimer acts as an E1 ligase for SUMO1, SUMO2, SUMO3, and probably SUMO4. It mediates ATP-dependent activation of SUMO proteins followed by formation of a thioester bond between a SUMO protein and a conserved active site cysteine residue on UBA2/SAE2.
<b>Cellular Location</b>	Nucleus.
<b>Tissue Location</b>	Expression level increases during S phase and drops in G2 phase (at protein level).

## Images

---



Please note: All products are 'FOR RESEARCH USE ONLY. NOT FOR USE IN DIAGNOSTIC OR THERAPEUTIC PROCEDURES'.