

# FHL2 Rabbit mAb

Catalog # AP78004

## Product Information

---

<b>Application</b>	WB, IF, ICC, IP
<b>Primary Accession</b>	<a href="#">Q14192</a>
<b>Reactivity</b>	Rat, Human, Mouse
<b>Host</b>	Rabbit
<b>Clonality</b>	Monoclonal Antibody
<b>Isotype</b>	IgG
<b>Conjugate</b>	Unconjugated
<b>Immunogen</b>	A synthesized peptide derived from human FHL2
<b>Purification</b>	Affinity Chromatography
<b>Calculated MW</b>	32193

## Additional Information

---

<b>Gene ID</b>	2274
<b>Other Names</b>	FHL2
<b>Dilution</b>	WB~~1/500-1/1000 IF~~1:50~200 ICC~~N/A IP~~N/A
<b>Format</b>	Liquid in 10mM PBS, pH 7.4, 150mM sodium chloride, 0.05% BSA, 0.02% sodium azide and 50% glycerol.
<b>Storage</b>	Store at 4°C short term. Aliquot and store at -20°C long term. Avoid freeze/thaw cycles.

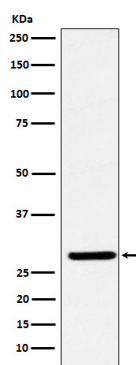
## Protein Information

---

<b>Name</b>	FHL2
<b>Synonyms</b>	DRAL, SLIM3
<b>Function</b>	May function as a molecular transmitter linking various signaling pathways to transcriptional regulation. Negatively regulates the transcriptional repressor E4F1 and may function in cell growth. Inhibits the transcriptional activity of FOXO1 and its apoptotic function by enhancing the interaction of FOXO1 with SIRT1 and FOXO1 deacetylation. Negatively regulates the calcineurin/NFAT signaling pathway in cardiomyocytes (PubMed: <a href="#">28717008</a> ).
<b>Cellular Location</b>	Cytoplasm. Nucleus. Cytoplasm, myofibril, sarcomere, Z line {ECO:0000250 UniProtKB:O35115}
<b>Tissue Location</b>	Expressed in skeletal muscle and heart.

## Images

---



Please note: All products are 'FOR RESEARCH USE ONLY. NOT FOR USE IN DIAGNOSTIC OR THERAPEUTIC PROCEDURES'.