

Laminin gamma 1 Rabbit mAb

Catalog # AP78097

Product Information

Application	WB, FC
Primary Accession	P11047
Reactivity	Human
Host	Rabbit
Clonality	Monoclonal Antibody
Isotype	IgG
Conjugate	Unconjugated
Immunogen	A synthesized peptide derived from human Laminin gamma 1
Purification	Affinity Chromatography
Calculated MW	177603

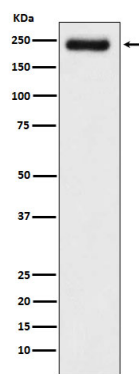
Additional Information

Gene ID	3915
Other Names	LAMC1
Dilution	WB~~1/500-1/1000 FC~~1:10~50
Format	Liquid in 10mM PBS, pH 7.4, 150mM sodium chloride, 0.05% BSA, 0.02% sodium azide and 50% glycerol.
Storage	Store at 4°C short term. Aliquot and store at -20°C long term. Avoid freeze/thaw cycles.

Protein Information

Name	LAMC1 {ECO:0000303 PubMed:28397838, ECO:0000312 HGNC:HGNC:6492}
Function	Binding to cells via a high affinity receptor, laminin is thought to mediate the attachment, migration and organization of cells into tissues during embryonic development by interacting with other extracellular matrix components.
Cellular Location	Secreted, extracellular space, extracellular matrix, basement membrane
Tissue Location	Found in the basement membranes (major component).

Images



Please note: All products are 'FOR RESEARCH USE ONLY. NOT FOR USE IN DIAGNOSTIC OR THERAPEUTIC PROCEDURES'.