

BRAF Antibody (T400)

Affinity Purified Rabbit Polyclonal Antibody (Pab)
Catalog # AP7810E

Product Information

Application	IHC-P, WB, E
Primary Accession	P15056
Other Accession	P28028
Reactivity	Human, Mouse
Predicted	Mouse
Host	Rabbit
Clonality	Polyclonal
Isotype	Rabbit IgG
Clone Names	RB13721
Calculated MW	84437
Antigen Region	379-408

Additional Information

Gene ID	673
Other Names	Serine/threonine-protein kinase B-raf, Proto-oncogene B-Raf, p94, v-Raf murine sarcoma viral oncogene homolog B1, BRAF, BRAF1, RAFB1
Target/Specificity	This BRAF antibody is generated from rabbits immunized with a KLH conjugated synthetic peptide between 379-408 amino acids from human BRAF.
Dilution	IHC-P~~1:100~500 WB~~1:1000 E~~Use at an assay dependent concentration.
Format	Purified polyclonal antibody supplied in PBS with 0.09% (W/V) sodium azide. This antibody is purified through a protein A column, followed by peptide affinity purification.
Storage	Maintain refrigerated at 2-8°C for up to 2 weeks. For long term storage store at -20°C in small aliquots to prevent freeze-thaw cycles.
Precautions	BRAF Antibody (T400) is for research use only and not for use in diagnostic or therapeutic procedures.

Protein Information

Name	BRAF (HGNC:1097)
Synonyms	BRAF1, RAFB1

Function	Protein kinase involved in the transduction of mitogenic signals from the cell membrane to the nucleus (Probable). Phosphorylates MAP2K1, and thereby activates the MAP kinase signal transduction pathway (PubMed: 21441910 , PubMed: 29433126). Phosphorylates PFKFB2 (PubMed: 36402789). May play a role in the postsynaptic responses of hippocampal neurons (PubMed: 1508179).
Cellular Location	Nucleus. Cytoplasm. Cell membrane. Note=Colocalizes with RGS14 and RAF1 in both the cytoplasm and membranes.
Tissue Location	Brain and testis.

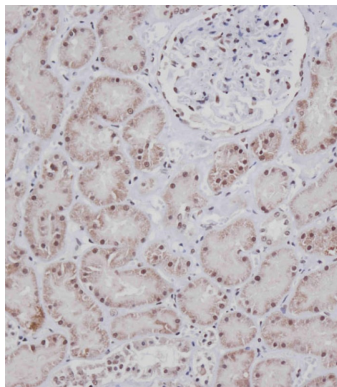
Background

BRAF, a member of the RAF subfamily of Ser/Thr protein kinases, is involved in the transduction of mitogenic signals from the cell membrane to the nucleus. It may play a role in the postsynaptic responses of hippocampal neurons. This cytoplasmic protein is expressed in brain and testis. Defects in BRAF are involved in a wide range of cancers including lung cancer and non-Hodgkin lymphoma (NHL). This protein contains 1 zinc-dependent phorbol-ester and DAG binding domain.

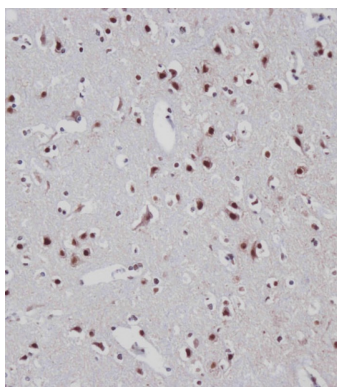
References

- Hingorani, S.R., et al., *Cancer Res.* 63(17):5198-5202 (2003).
 Lee, J.W., et al., *Br. J. Cancer* 89(10):1958-1960 (2003).
 Davies, H., et al., *Nature* 417(6892):949-954 (2002).
 Naoki, K., et al., *Cancer Res.* 62(23):7001-7003 (2002).
 Stephens, R.M., et al., *Mol. Cell. Biol.* 12(9):3733-3742 (1992).

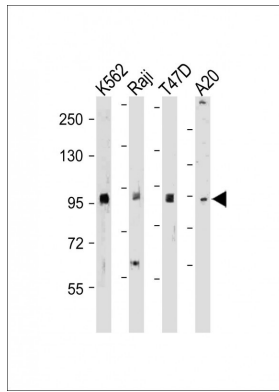
Images



Immunohistochemical analysis of AP7810E on paraffin-embedded Human kidney tissue. Tissue was fixed with formaldehyde at room temperature. Heat induced epitope retrieval was performed by EDTA buffer (pH9. 0). Samples were incubated with primary antibody(1:100) for 1 hour at room temperature. Undiluted CRF Anti-Polyvalent HRP Polymer antibody was used as the secondary antibody.



Immunohistochemical analysis of AP7810E on paraffin-embedded Human brain tissue. Tissue was fixed with formaldehyde at room temperature. Heat induced epitope retrieval was performed by EDTA buffer (pH9. 0). Samples were incubated with primary antibody(1:100) for 1 hour at room temperature. Undiluted CRF Anti-Polyvalent HRP Polymer antibody was used as the secondary antibody.



All lanes : Anti-BRAF Antibody (T400) at 1:500-2000 dilution Lane 1: K562 whole cell lysate Lane 2: Raji whole cell lysate Lane 3: T47D whole cell lysate Lane 4: A20 whole cell lysate Lysates/proteins at 20 µg per lane. Secondary Goat Anti-Rabbit IgG, (H+L), Peroxidase conjugated at 1/10000 dilution. Predicted band size : 84 kDa Blocking/Dilution buffer: 5% NFDM/TBST.

Please note: All products are 'FOR RESEARCH USE ONLY. NOT FOR USE IN DIAGNOSTIC OR THERAPEUTIC PROCEDURES'.