

BRAF Antibody

Affinity Purified Rabbit Polyclonal Antibody (Pab)

Catalog # AP7810n

Product Information

Application	WB, FC, E
Primary Accession	P15056
Reactivity	Human
Host	Rabbit
Clonality	Polyclonal
Isotype	Rabbit IgG
Calculated MW	84437

Additional Information

Gene ID	673
Other Names	Serine/threonine-protein kinase B-raf, Proto-oncogene B-Raf, p94, v-Raf murine sarcoma viral oncogene homolog B1, BRAF, BRAF1, RAFB1
Target/Specificity	This BRAF antibody is generated from rabbits immunized with BRAF recombinant protein.
Dilution	WB~~1:1000 FC~~1:10~50 E~~Use at an assay dependent concentration.
Format	Purified polyclonal antibody supplied in PBS with 0.09% (W/V) sodium azide. This antibody is purified through a protein A column, followed by peptide affinity purification.
Storage	Maintain refrigerated at 2-8°C for up to 2 weeks. For long term storage store at -20°C in small aliquots to prevent freeze-thaw cycles.
Precautions	BRAF Antibody is for research use only and not for use in diagnostic or therapeutic procedures.

Protein Information

Name	BRAF (HGNC:1097)
Synonyms	BRAF1, RAFB1
Function	Protein kinase involved in the transduction of mitogenic signals from the cell membrane to the nucleus (Probable). Phosphorylates MAP2K1, and thereby activates the MAP kinase signal transduction pathway (PubMed: 21441910 , PubMed: 29433126). Phosphorylates PFKFB2 (PubMed: 36402789). May play a role in the postsynaptic responses of hippocampal neurons (PubMed: 1508179).

Cellular Location Nucleus. Cytoplasm. Cell membrane. Note=Colocalizes with RGS14 and RAF1 in both the cytoplasm and membranes.

Tissue Location Brain and testis.

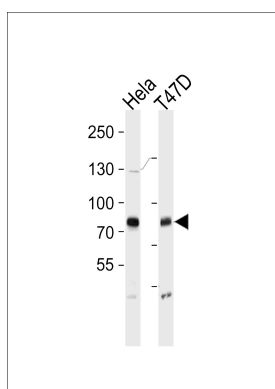
Background

BRAF, a member of the RAF subfamily of Ser/Thr protein kinases, is involved in the transduction of mitogenic signals from the cell membrane to the nucleus. It may play a role in the postsynaptic responses of hippocampal neurons. This cytoplasmic protein is expressed in brain and testis. Defects in BRAF are involved in a wide range of cancers including lung cancer and non-Hodgkin lymphoma (NHL). This protein contains 1 zinc-dependent phorbol-ester and DAG binding domain.

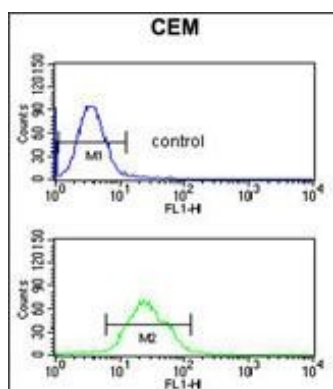
References

Hingorani, S.R., et al., Cancer Res. 63(17):5198-5202 (2003).
Lee, J.W., et al., Br. J. Cancer 89(10):1958-1960 (2003).
Davies, H., et al., Nature 417(6892):949-954 (2002).
Naoki, K., et al., Cancer Res. 62(23):7001-7003 (2002).
Stephens, R.M., et al., Mol. Cell. Biol. 12(9):3733-3742 (1992).

Images



BRAF Antibody (Cat. #AP7810n) western blot analysis in HeLa,T47D cell line lysates (35ug/lane).This demonstrates the BRAF antibody detected the BRAF protein (arrow).



BRAF Antibody (Cat. #AP7810n) flow cytometric analysis of CEM cells (bottom histogram) compared to a negative control cell (top histogram).FITC-conjugated goat-anti-rabbit secondary antibodies were used for the analysis.

Citations

- [BRAF drives synovial fibroblast transformation in rheumatoid arthritis.](#)

Please note: All products are 'FOR RESEARCH USE ONLY. NOT FOR USE IN DIAGNOSTIC OR THERAPEUTIC PROCEDURES'.