

# SRSF3 Rabbit mAb

Catalog # AP78130

## Product Information

---

<b>Application</b>	WB, IHC-P, IF, FC, ICC
<b>Primary Accession</b>	<a href="#">P84103</a>
<b>Reactivity</b>	Rat, Human, Mouse
<b>Host</b>	Rabbit
<b>Clonality</b>	Monoclonal Antibody
<b>Isotype</b>	IgG
<b>Conjugate</b>	Unconjugated
<b>Immunogen</b>	A synthesized peptide derived from human SRSF3
<b>Purification</b>	Affinity Chromatography
<b>Calculated MW</b>	19330

## Additional Information

---

<b>Gene ID</b>	6428
<b>Other Names</b>	SRSF3
<b>Dilution</b>	WB~~1/500-1/1000 IHC-P~~N/A IF~~1:50~200 FC~~1:10~50 ICC~~N/A
<b>Format</b>	Liquid in 10mM PBS, pH 7.4, 150mM sodium chloride, 0.05% BSA, 0.02% sodium azide and 50% glycerol.
<b>Storage</b>	Store at 4°C short term. Aliquot and store at -20°C long term. Avoid freeze/thaw cycles.

## Protein Information

---

<b>Name</b>	SRSF3
<b>Synonyms</b>	SFRS3, SRP20
<b>Function</b>	Splicing factor, which binds the consensus motif 5'-C[ACU][AU]C[ACU][AC]C-3' within pre-mRNA and promotes specific exons inclusion during alternative splicing (PubMed: <a href="#">17036044</a> , PubMed: <a href="#">26876937</a> , PubMed: <a href="#">32440474</a> ). Interaction with YTHDC1, a RNA- binding protein that recognizes and binds N6-methyladenosine (m6A)- containing RNAs, promotes recruitment of SRSF3 to its mRNA-binding elements adjacent to m6A sites within exons (PubMed: <a href="#">26876937</a> ). Also functions as an adapter involved in mRNA nuclear export (PubMed: <a href="#">11336712</a> , PubMed: <a href="#">18364396</a> , PubMed: <a href="#">28984244</a> ). Binds mRNA which is thought to be transferred to the NXF1-NXT1 heterodimer for export (TAP/NXF1 pathway); enhances NXF1-NXT1 RNA-binding activity (PubMed: <a href="#">11336712</a> , PubMed: <a href="#">18364396</a> ). Involved in nuclear export of m6A- containing mRNAs via interaction with YTHDC1:

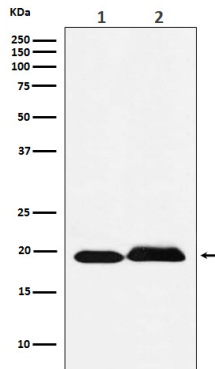
interaction with YTHDC1 facilitates m6A-containing mRNA-binding to both SRSF3 and NXF1, promoting mRNA nuclear export (PubMed:[28984244](#)).

## Cellular Location

Nucleus. Nucleus speckle. Cytoplasm. Note=Recruited to nuclear speckles following interaction with YTHDC1.

## Images

---



Please note: All products are 'FOR RESEARCH USE ONLY. NOT FOR USE IN DIAGNOSTIC OR THERAPEUTIC PROCEDURES'.