

Hsf2 Rabbit mAb

Catalog # AP78157

Product Information

Application	WB, IF, FC, ICC
Primary Accession	Q03933
Reactivity	Human
Host	Rabbit
Clonality	Monoclonal Antibody
Isotype	IgG
Conjugate	Unconjugated
Immunogen	A synthesized peptide derived from human HSF2
Purification	Affinity Chromatography
Calculated MW	60348

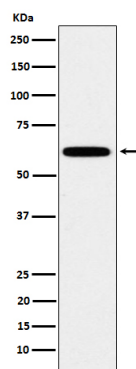
Additional Information

Gene ID	3298
Other Names	HSF2
Dilution	WB~~1/500-1/1000 IF~~1:50~200 FC~~1:10~50 ICC~~N/A
Format	Liquid in 10mM PBS, pH 7.4, 150mM sodium chloride, 0.05% BSA, 0.02% sodium azide and 50% glycerol.
Storage	Store at 4°C short term. Aliquot and store at -20°C long term. Avoid freeze/thaw cycles.

Protein Information

Name	HSF2
Synonyms	HSTF2
Function	DNA-binding protein that specifically binds heat shock promoter elements (HSE) and activates transcription. In higher eukaryotes, HSF is unable to bind to the HSE unless the cells are heat shocked.
Cellular Location	Cytoplasm. Nucleus. Note=Cytoplasmic during normal growth and moves to the nucleus upon activation

Images



Please note: All products are 'FOR RESEARCH USE ONLY. NOT FOR USE IN DIAGNOSTIC OR THERAPEUTIC PROCEDURES'.