

TCP 1 alpha Rabbit mAb

Catalog # AP78158

Product Information

Application	WB, IHC-P, IF, ICC, IP
Primary Accession	P17987
Reactivity	Human
Host	Rabbit
Clonality	Monoclonal Antibody
Isotype	IgG
Conjugate	Unconjugated
Immunogen	A synthesized peptide derived from human TCP1 alpha
Purification	Affinity Chromatography
Calculated MW	60344

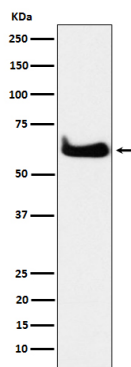
Additional Information

Gene ID	6950
Other Names	TCP1
Dilution	WB~~1/500-1/1000 IHC-P~~N/A IF~~1:50~200 ICC~~N/A IP~~N/A
Format	Liquid in 10mM PBS, pH 7.4, 150mM sodium chloride, 0.05% BSA, 0.02% sodium azide and 50% glycerol.
Storage	Store at 4°C short term. Aliquot and store at -20°C long term. Avoid freeze/thaw cycles.

Protein Information

Name	TCPA
Function	Component of the chaperonin-containing T-complex (TRiC), a molecular chaperone complex that assists the folding of actin, tubulin and other proteins upon ATP hydrolysis (PubMed: 25467444 , PubMed: 36493755 , PubMed: 35449234 , PubMed: 37193829). The TRiC complex mediates the folding of WRAP53/TCAB1, thereby regulating telomere maintenance (PubMed: 25467444). As part of the TRiC complex may play a role in the assembly of BBSome, a complex involved in ciliogenesis regulating transports vesicles to the cilia (PubMed: 20080638).
Cellular Location	Cytoplasm, cytosol. Cytoplasm, cytoskeleton, microtubule organizing center, centrosome

Images



Please note: All products are 'FOR RESEARCH USE ONLY. NOT FOR USE IN DIAGNOSTIC OR THERAPEUTIC PROCEDURES'.