

Plastin L Rabbit mAb

Catalog # AP78165

Product Information

Application	WB, IHC-P, IF, FC, ICC, IP
Primary Accession	P13796
Reactivity	Human
Host	Rabbit
Clonality	Monoclonal Antibody
Isotype	IgG
Conjugate	Unconjugated
Immunogen	A synthesized peptide derived from human Plastin L
Purification	Affinity Chromatography
Calculated MW	70288

Additional Information

Gene ID	3936
Other Names	LCP1
Dilution	WB~~1/500-1/1000 IHC-P~~N/A IF~~1:50~200 FC~~1:10~50 ICC~~N/A IP~~N/A
Format	Liquid in 10mM PBS, pH 7.4, 150mM sodium chloride, 0.05% BSA, 0.02% sodium azide and 50% glycerol.
Storage	Store at 4°C short term. Aliquot and store at -20°C long term. Avoid freeze/thaw cycles.

Protein Information

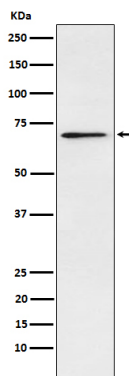
Name	LCP1
Synonyms	PLS2
Function	Actin-binding protein (PubMed: 16636079 , PubMed: 17294403 , PubMed: 28493397). Plays a role in the activation of T-cells in response to costimulation through TCR/CD3 and CD2 or CD28 (PubMed: 17294403). Modulates the cell surface expression of IL2RA/CD25 and CD69 (PubMed: 17294403).
Cellular Location	Cytoplasm, cytoskeleton. Cell junction. Cell projection. Cell projection, ruffle membrane {ECO:0000250 UniProtKB:Q61233, ECO:0000269 PubMed:16636079}; Peripheral membrane protein {ECO:0000250 UniProtKB:Q61233}; Cytoplasmic side {ECO:0000250 UniProtKB:Q61233}. Note=Relocalizes to the immunological

synapse between peripheral blood T-lymphocytes and antibody-presenting cells in response to costimulation through TCR/CD3 and CD2 or CD28 (PubMed:17294403). Associated with the actin cytoskeleton at membrane ruffles. Relocalizes to actin-rich cell projections upon serine phosphorylation (PubMed:16636079). {ECO:0000250 | UniProtKB:Q61233, ECO:0000269 | PubMed:16636079, ECO:0000269 | PubMed:17294403}

Tissue Location

Detected in intestinal microvilli, hair cell stereocilia, and fibroblast filopodia, in spleen and other lymph node- containing organs. Expressed in peripheral blood T-lymphocytes, neutrophils, monocytes, B-lymphocytes, and myeloid cells

Images



Please note: All products are 'FOR RESEARCH USE ONLY. NOT FOR USE IN DIAGNOSTIC OR THERAPEUTIC PROCEDURES'.