

EWSR1 Rabbit mAb

Catalog # AP78172

Product Information

Application	WB, IHC-P, IF, ICC
Primary Accession	Q01844
Reactivity	Rat, Human, Mouse
Host	Rabbit
Clonality	Monoclonal Antibody
Isotype	IgG
Conjugate	Unconjugated
Immunogen	A synthesized peptide derived from human EWSR1
Purification	Affinity Chromatography
Calculated MW	68478

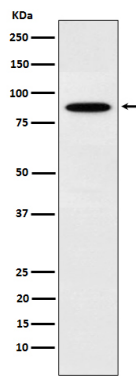
Additional Information

Gene ID	2130
Other Names	EWSR1
Dilution	WB~~1/500-1/1000 IHC-P~~N/A IF~~1:50~200 ICC~~N/A
Format	Liquid in 10mM PBS, pH 7.4, 150mM sodium chloride, 0.05% BSA, 0.02% sodium azide and 50% glycerol.
Storage	Store at 4°C short term. Aliquot and store at -20°C long term. Avoid freeze/thaw cycles.

Protein Information

Name	EWSR1
Synonyms	EWS
Function	Binds to ssRNA containing the consensus sequence 5'-AGGUAA-3' (PubMed: 21256132). Might normally function as a transcriptional repressor (PubMed: 10767297). EWS-fusion-proteins (EFPS) may play a role in the tumorigenic process. They may disturb gene expression by mimicking, or interfering with the normal function of CTD-POLII within the transcription initiation complex. They may also contribute to an aberrant activation of the fusion protein target genes.
Cellular Location	Nucleus. Cytoplasm. Cell membrane. Note=Relocates from cytoplasm to ribosomes upon PTK2B/FAK2 activation
Tissue Location	Ubiquitous.

Images



Please note: All products are 'FOR RESEARCH USE ONLY. NOT FOR USE IN DIAGNOSTIC OR THERAPEUTIC PROCEDURES'.