

WAPL Rabbit mAb

Catalog # AP78218

Product Information

Application	WB, IF, ICC, IP
Primary Accession	Q7Z5K2
Reactivity	Human
Host	Rabbit
Clonality	Monoclonal Antibody
Isotype	IgG
Conjugate	Unconjugated
Immunogen	A synthesized peptide derived from human WAPL
Purification	Affinity Purified
Calculated MW	132946

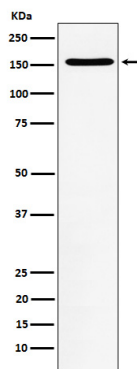
Additional Information

Gene ID	23063
Other Names	WAPL
Dilution	WB~~1/500-1/1000 IF~~1:50~200 ICC~~N/A IP~~N/A
Format	Liquid in 10mM PBS, pH 7.4, 150mM sodium chloride, 0.05% BSA, 0.02% sodium azide and 50% glycerol.
Storage	Store at 4°C short term. Aliquot and store at -20°C long term. Avoid freeze/thaw cycles.

Protein Information

Name	WAPL (HGNC:23293)
Synonyms	FOE, KIAA0261, WAPAL
Function	Regulator of sister chromatid cohesion in mitosis which negatively regulates cohesin association with chromatin (PubMed: 26299517). Involved in both sister chromatid cohesion during interphase and sister-chromatid resolution during early stages of mitosis. Couples DNA replication to sister chromatid cohesion. Cohesion ensures that chromosome partitioning is accurate in both meiotic and mitotic cells and plays an important role in DNA repair.
Cellular Location	[Isoform 2]: Nucleus.
Tissue Location	Isoform 1 is highly expressed in uterine cervix tumor. Isoform 2 is widely expressed with a high level in skeletal muscle and heart.

Images



Please note: All products are 'FOR RESEARCH USE ONLY. NOT FOR USE IN DIAGNOSTIC OR THERAPEUTIC PROCEDURES'.