

# CBX2 Rabbit mAb

Catalog # AP78230

## Product Information

---

<b>Application</b>	WB, FC
<b>Primary Accession</b>	<a href="#">Q14781</a>
<b>Reactivity</b>	Rat, Human, Mouse
<b>Host</b>	Rabbit
<b>Clonality</b>	Monoclonal Antibody
<b>Isotype</b>	IgG
<b>Conjugate</b>	Unconjugated
<b>Immunogen</b>	A synthesized peptide derived from human CBX2
<b>Purification</b>	Affinity Purified
<b>Calculated MW</b>	56081

## Additional Information

---

<b>Gene ID</b>	84733
<b>Other Names</b>	CBX2
<b>Dilution</b>	WB~~1/500-1/1000 FC~~1:10~50
<b>Format</b>	Liquid in 10mM PBS, pH 7.4, 150mM sodium chloride, 0.05% BSA, 0.02% sodium azide and 50% glycerol.
<b>Storage</b>	Store at 4°C short term. Aliquot and store at -20°C long term. Avoid freeze/thaw cycles.

## Protein Information

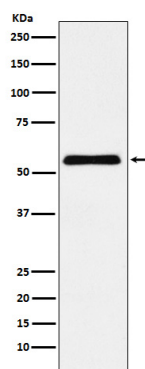
---

<b>Name</b>	CBX2
<b>Function</b>	Component of a Polycomb group (PcG) multiprotein PRC1-like complex, a complex class required to maintain the transcriptionally repressive state of many genes, including Hox genes, throughout development (PubMed: <a href="#">21282530</a> ). PcG PRC1 complex acts via chromatin remodeling and modification of histones; it mediates monoubiquitination of histone H2A 'Lys-119', rendering chromatin heritably changed in its expressibility (PubMed: <a href="#">21282530</a> ). Binds to histone H3 trimethylated at 'Lys-9' (H3K9me3) or at 'Lys-27' (H3K27me3) (By similarity). Plays a role in the lineage differentiation of the germ layers in embryonic development (By similarity). Involved in sexual development, acting as activator of NR5A1 expression (PubMed: <a href="#">19361780</a> ).
<b>Cellular Location</b>	Nucleus. Chromosome Note=Localized in distinct foci on chromatin and in chromocenters Localizes to the inactive X chromosome. Seems to be

recruited to H3K27me3, H3K9ac and H3K3me2 sites on chromatin

## Images

---



Please note: All products are 'FOR RESEARCH USE ONLY. NOT FOR USE IN DIAGNOSTIC OR THERAPEUTIC PROCEDURES'.