

# BMF Rabbit mAb

Catalog # AP78236

## Product Information

---

<b>Application</b>	WB, FC
<b>Primary Accession</b>	<a href="#">Q96LC9</a>
<b>Reactivity</b>	Rat, Human, Mouse
<b>Host</b>	Rabbit
<b>Clonality</b>	Monoclonal Antibody
<b>Isotype</b>	IgG
<b>Conjugate</b>	Unconjugated
<b>Immunogen</b>	A synthesized peptide derived from human Bmf
<b>Purification</b>	Affinity Purified
<b>Calculated MW</b>	20508

## Additional Information

---

<b>Gene ID</b>	90427
<b>Other Names</b>	BMF
<b>Dilution</b>	WB~~1/500-1/1000 FC~~1:10~50
<b>Format</b>	Liquid in 10mM PBS, pH 7.4, 150mM sodium chloride, 0.05% BSA, 0.02% sodium azide and 50% glycerol.
<b>Storage</b>	Store at 4°C short term. Aliquot and store at -20°C long term. Avoid freeze/thaw cycles.

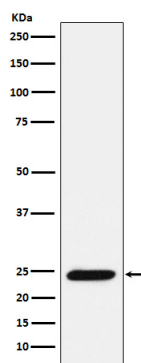
## Protein Information

---

<b>Name</b>	BMF
<b>Function</b>	May play a role in apoptosis. Isoform 1 seems to be the main initiator.
<b>Tissue Location</b>	Isoform 1 is mainly expressed in B-lymphoid cells. Isoform 2 and isoform 3 are mainly expressed in B-CLL and normal B- cells.

## Images

---



Please note: All products are 'FOR RESEARCH USE ONLY. NOT FOR USE IN DIAGNOSTIC OR THERAPEUTIC PROCEDURES'.