

ENT2 Rabbit mAb

Catalog # AP78240

Product Information

Application	WB, IHC-P, IF, FC, ICC
Primary Accession	Q14542
Reactivity	Rat, Human, Mouse
Host	Rabbit
Clonality	Monoclonal Antibody
Isotype	IgG
Conjugate	Unconjugated
Immunogen	A synthesized peptide derived from human ENT2
Purification	Affinity Purified
Calculated MW	50113

Additional Information

Gene ID	3177
Other Names	SLC29A2
Dilution	WB~~1/500-1/1000 IHC-P~~N/A IF~~1:50~200 FC~~1:10~50 ICC~~N/A
Format	Liquid in 10mM PBS, pH 7.4, 150mM sodium chloride, 0.05% BSA, 0.02% sodium azide and 50% glycerol.
Storage	Store at 4°C short term. Aliquot and store at -20°C long term. Avoid freeze/thaw cycles.

Protein Information

Name	SLC29A2 (HGNC:11004)
Synonyms	DER12, ENT2, HNP36
Function	<p>Bidirectional uniporter involved in the facilitative transport of nucleosides and nucleobases, and contributes to maintaining their cellular homeostasis (PubMed:10722669, PubMed:12527552, PubMed:12590919, PubMed:16214850, PubMed:21795683, PubMed:9396714, PubMed:9478986). Functions as a Na(+)-independent, passive transporter (PubMed:9478986). Involved in the transport of nucleosides such as inosine, adenosine, uridine, thymidine, cytidine and guanosine (PubMed:10722669, PubMed:12527552, PubMed:12590919, PubMed:16214850, PubMed:21795683, PubMed:9396714, PubMed:9478986). Also able to transport purine nucleobases (hypoxanthine, adenine, guanine) and pyrimidine nucleobases (thymine, uracil) (PubMed:16214850, PubMed:21795683). Involved in nucleoside transport at basolateral membrane of kidney cells, allowing liver absorption of nucleoside</p>

metabolites (PubMed:[12527552](#)). Mediates apical nucleoside uptake into Sertoli cells, thereby regulating the transport of nucleosides in testis across the blood-testis-barrier (PubMed:[23639800](#)). Mediates both the influx and efflux of hypoxanthine in skeletal muscle microvascular endothelial cells to control the amount of intracellular hypoxanthine available for xanthine oxidase-mediated ROS production (By similarity).

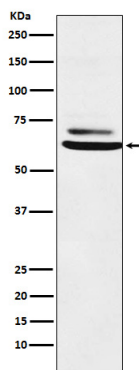
Cellular Location

Apical cell membrane; Multi-pass membrane protein. Basolateral cell membrane; Multi-pass membrane protein. Note=Localized to the apical membrane of Sertoli cells.

Tissue Location

Highly expressed in skeletal muscle (PubMed:9478986). Expressed in liver, lung, placenta, brain, heart, kidney and ovarian tissues (PubMed:9478986). Expressed in testis at the blood-brain-barrier (PubMed:23639800).

Images



Please note: All products are 'FOR RESEARCH USE ONLY. NOT FOR USE IN DIAGNOSTIC OR THERAPEUTIC PROCEDURES'.