

Legumain Rabbit mAb

Catalog # AP78252

Product Information

Application	WB
Primary Accession	Q99538
Reactivity	Rat, Human, Mouse
Host	Rabbit
Clonality	Monoclonal Antibody
Isotype	IgG
Conjugate	Unconjugated
Immunogen	A synthesized peptide derived from human Legumain
Purification	Affinity Purified
Calculated MW	49411

Additional Information

Gene ID	5641
Other Names	LGMN
Dilution	WB~~1/500-1/1000
Format	Liquid in 10mM PBS, pH 7.4, 150mM sodium chloride, 0.05% BSA, 0.02% sodium azide and 50% glycerol.
Storage	Store at 4°C short term. Aliquot and store at -20°C long term. Avoid freeze/thaw cycles.

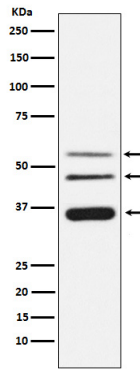
Protein Information

Name	LGMN {ECO:0000303 PubMed:30425301, ECO:0000312 HGNC:HGNC:9472}
Function	Has a strict specificity for hydrolysis of asparaginyl bonds (PubMed: 23776206). Can also cleave aspartyl bonds slowly, especially under acidic conditions (PubMed: 23776206). Involved in the processing of proteins for MHC class II antigen presentation in the lysosomal/endosomal system (PubMed: 9872320). Also involved in MHC class I antigen presentation in cross-presenting dendritic cells by mediating cleavage and maturation of Perforin-2 (MPEG1), thereby promoting antigen translocation in the cytosol (By similarity). Required for normal lysosomal protein degradation in renal proximal tubules (By similarity). Required for normal degradation of internalized EGFR (By similarity). Plays a role in the regulation of cell proliferation via its role in EGFR degradation (By similarity).
Cellular Location	Lysosome.

Tissue Location

Ubiquitous. Particularly abundant in kidney, heart and placenta.

Images



Please note: All products are 'FOR RESEARCH USE ONLY. NOT FOR USE IN DIAGNOSTIC OR THERAPEUTIC PROCEDURES'.