

DDX39B Rabbit mAb

Catalog # AP78253

Product Information

Application	WB, IHC-P, IF, FC, ICC
Primary Accession	Q13838
Reactivity	Rat, Human, Mouse
Host	Rabbit
Clonality	Monoclonal Antibody
Isotype	IgG
Conjugate	Unconjugated
Immunogen	A synthesized peptide derived from human UAP56
Purification	Affinity Purified
Calculated MW	48991

Additional Information

Gene ID	7919
Other Names	DDX39B
Dilution	WB~~1/500-1/1000 IHC-P~~N/A IF~~1:50~200 FC~~1:10~50 ICC~~N/A
Format	Liquid in 10mM PBS, pH 7.4, 150mM sodium chloride, 0.05% BSA, 0.02% sodium azide and 50% glycerol.
Storage	Store at 4°C short term. Aliquot and store at -20°C long term. Avoid freeze/thaw cycles.

Protein Information

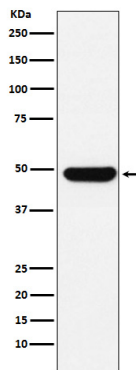
Name	DDX39B (HGNC:13917)
Synonyms	BAT1, UAP56
Function	Involved in nuclear export of spliced and unspliced mRNA (PubMed: 15833825 , PubMed: 15998806 , PubMed: 17190602). Component of the TREX complex which is thought to couple mRNA transcription, processing and nuclear export, and specifically associates with spliced mRNA and not with unspliced pre-mRNA (PubMed: 15833825 , PubMed: 15998806 , PubMed: 17190602). The TREX complex is recruited to spliced mRNAs by a transcription-independent mechanism, binds to mRNA upstream of the exon-junction complex (EJC) and is recruited in a splicing- and cap- dependent manner to a region near the 5' end of the mRNA where it functions in mRNA export to the cytoplasm via the TAP/NXF1 pathway (PubMed: 15833825 , PubMed: 15998806 , PubMed: 17190602). The THOC1-THOC2- THOC3 core complex alone is sufficient to promote ATPase activity of DDX39B; in the

complex THOC2 is the only component that directly interacts with DDX39B (PubMed:[33191911](#)). Associates with SARNP/CIP29, which facilitates RNA binding of DDX39B and likely plays a role in mRNA export (PubMed:[37578863](#)). May undergo several rounds of ATP hydrolysis during assembly of TREX to drive subsequent loading of components such as ALYREF/THOC4 and CHTOP onto mRNA. Also associates with pre-mRNA independent of ALYREF/THOC4. Involved in the nuclear export of intronless mRNA; the ATP-bound form is proposed to recruit export adapter ALYREF/THOC4 to intronless mRNA; its ATPase activity is cooperatively stimulated by RNA and ALYREF/THOC4 and ATP hydrolysis is thought to trigger the dissociation from RNA to allow the association of ALYREF/THOC4 and the NXF1-NXT1 heterodimer. Involved in transcription elongation and genome stability.

Cellular Location

Nucleus. Nucleus speckle. Cytoplasm. Note=Can translocate to the cytoplasm in the presence of MX1. TREX complex assembly seems to occur in regions surrounding nuclear speckles known as perispeckles

Images



Please note: All products are 'FOR RESEARCH USE ONLY. NOT FOR USE IN DIAGNOSTIC OR THERAPEUTIC PROCEDURES'.