

WAS Rabbit mAb

Catalog # AP78281

Product Information

Application	WB, IF, FC, ICC, IP
Primary Accession	P42768
Reactivity	Rat, Human, Mouse
Host	Rabbit
Clonality	Monoclonal Antibody
Isotype	IgG
Conjugate	Unconjugated
Immunogen	A synthesized peptide derived from human WASP
Purification	Affinity Purified
Calculated MW	52913

Additional Information

Gene ID	7454
Other Names	WAS
Dilution	WB~~1/500-1/1000 IF~~1:50~200 FC~~1:10~50 ICC~~N/A IP~~N/A
Format	Liquid in 10mM PBS, pH 7.4, 150mM sodium chloride, 0.05% BSA, 0.02% sodium azide and 50% glycerol.
Storage	Store at 4°C short term. Aliquot and store at -20°C long term. Avoid freeze/thaw cycles.

Protein Information

Name	WAS
Synonyms	IMD2
Function	Effector protein for Rho-type GTPases that regulates actin filament reorganization via its interaction with the Arp2/3 complex (PubMed: 12235133 , PubMed: 12769847 , PubMed: 16275905). Important for efficient actin polymerization (PubMed: 12235133 , PubMed: 16275905 , PubMed: 8625410). Possible regulator of lymphocyte and platelet function (PubMed: 9405671). Mediates actin filament reorganization and the formation of actin pedestals upon infection by pathogenic bacteria (PubMed: 18650809). In addition to its role in the cytoplasmic cytoskeleton, also promotes actin polymerization in the nucleus, thereby regulating gene transcription and repair of damaged DNA (PubMed: 20574068). Promotes homologous recombination (HR) repair in response to DNA damage by promoting nuclear actin polymerization, leading to drive motility of double-strand breaks (DSBs) (PubMed: 29925947).

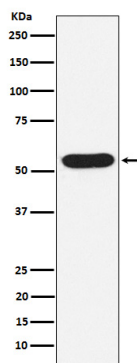
Cellular Location

Cytoplasm, cytoskeleton. Nucleus

Tissue Location

Expressed predominantly in the thymus. Also found, to a much lesser extent, in the spleen.

Images



Please note: All products are 'FOR RESEARCH USE ONLY. NOT FOR USE IN DIAGNOSTIC OR THERAPEUTIC PROCEDURES'.