

alpha 1 Spectrin Rabbit mAb

Catalog # AP78287

Product Information

Application	WB, IF, FC, ICC
Primary Accession	P02549
Reactivity	Rat, Human, Mouse
Host	Rabbit
Clonality	Monoclonal Antibody
Isotype	IgG
Conjugate	Unconjugated
Immunogen	A synthesized peptide derived from human alpha 1 Spectrin
Purification	Affinity Purified
Calculated MW	280014

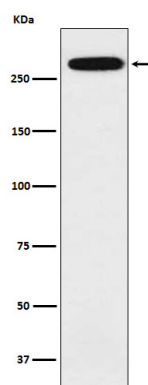
Additional Information

Gene ID	6708
Other Names	SPTA1
Dilution	WB~~1/500-1/1000 IF~~1:50~200 FC~~1:10~50 ICC~~N/A
Format	Liquid in 10mM PBS, pH 7.4, 150mM sodium chloride, 0.05% BSA, 0.02% sodium azide and 50% glycerol.
Storage	Store at 4°C short term. Aliquot and store at -20°C long term. Avoid freeze/thaw cycles.

Protein Information

Name	SPTA1
Synonyms	SPTA
Function	Spectrin is the major constituent of the cytoskeletal network underlying the erythrocyte plasma membrane. It associates with band 4.1 and actin to form the cytoskeletal superstructure of the erythrocyte plasma membrane.
Cellular Location	Cytoplasm, cytoskeleton. Cytoplasm, cell cortex.

Images



Please note: All products are 'FOR RESEARCH USE ONLY. NOT FOR USE IN DIAGNOSTIC OR THERAPEUTIC PROCEDURES'.