

Lysosome Membrane Protein 2 Rabbit mAb

Catalog # AP78294

Product Information

Application	WB, IHC-P, FC, IP
Primary Accession	Q14108
Reactivity	Rat, Human, Mouse
Host	Rabbit
Clonality	Monoclonal Antibody
Isotype	IgG
Conjugate	Unconjugated
Immunogen	A synthesized peptide derived from human LIMPII
Purification	Affinity Purified
Calculated MW	54290

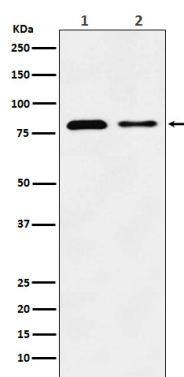
Additional Information

Gene ID	950
Other Names	SCARB2
Dilution	WB~~1/500-1/1000 IHC-P~~N/A FC~~1:10~50 IP~~N/A
Format	Liquid in 10mM PBS, pH 7.4, 150mM sodium chloride, 0.05% BSA, 0.02% sodium azide and 50% glycerol.
Storage	Store at 4°C short term. Aliquot and store at -20°C long term. Avoid freeze/thaw cycles.

Protein Information

Name	SCARB2
Synonyms	CD36L2, LIMP2, LIMPII
Function	Acts as a lysosomal receptor for glucosylceramidase (GBA1) targeting.
Cellular Location	Lysosome membrane; Multi-pass membrane protein

Images



Please note: All products are 'FOR RESEARCH USE ONLY. NOT FOR USE IN DIAGNOSTIC OR THERAPEUTIC PROCEDURES'.