

# Thyroid Hormone Receptor alpha Rabbit mAb

Catalog # AP78298

## Product Information

---

<b>Application</b>	WB
<b>Primary Accession</b>	<a href="#">P10827</a>
<b>Reactivity</b>	Human
<b>Host</b>	Rabbit
<b>Clonality</b>	Monoclonal Antibody
<b>Isotype</b>	IgG
<b>Conjugate</b>	Unconjugated
<b>Immunogen</b>	A synthesized peptide derived from human THRA
<b>Purification</b>	Affinity Purified
<b>Calculated MW</b>	54816

## Additional Information

---

<b>Gene ID</b>	7067
<b>Other Names</b>	THRA
<b>Dilution</b>	WB~~1/500-1/1000
<b>Format</b>	Liquid in 10mM PBS, pH 7.4, 150mM sodium chloride, 0.05% BSA, 0.02% sodium azide and 50% glycerol.
<b>Storage</b>	Store at 4°C short term. Aliquot and store at -20°C long term. Avoid freeze/thaw cycles.

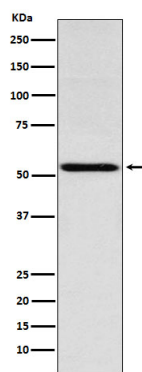
## Protein Information

---

<b>Name</b>	THRA
<b>Synonyms</b>	EAR7, ERBA1, NR1A1, THRA1, THRA2
<b>Function</b>	[Isoform Alpha-1]: Nuclear hormone receptor that can act as a repressor or activator of transcription. High affinity receptor for thyroid hormones, including triiodothyronine and thyroxine.
<b>Cellular Location</b>	Nucleus.

## Images

---



Please note: All products are 'FOR RESEARCH USE ONLY. NOT FOR USE IN DIAGNOSTIC OR THERAPEUTIC PROCEDURES'.