

BCHE Antibody (Center)

Purified Rabbit Polyclonal Antibody (Pab)

Catalog # AP7829c

Product Information

Application	WB, E
Primary Accession	P06276
Reactivity	Human
Host	Rabbit
Clonality	Polyclonal
Isotype	Rabbit IgG
Calculated MW	68418
Antigen Region	385-415

Additional Information

Gene ID	590
Other Names	Cholinesterase, Acylcholine acylhydrolase, Butyrylcholine esterase, Choline esterase II, Pseudocholinesterase, BCHE, CHE1
Target/Specificity	This BCHE antibody is generated from rabbits immunized with a KLH conjugated synthetic peptide between 385-415 amino acids from the Central region of human BCHE.
Dilution	WB~~1:1000 E~~Use at an assay dependent concentration.
Format	Purified polyclonal antibody supplied in PBS with 0.09% (W/V) sodium azide. This antibody is prepared by Saturated Ammonium Sulfate (SAS) precipitation followed by dialysis against PBS.
Storage	Maintain refrigerated at 2-8°C for up to 2 weeks. For long term storage store at -20°C in small aliquots to prevent freeze-thaw cycles.
Precautions	BCHE Antibody (Center) is for research use only and not for use in diagnostic or therapeutic procedures.

Protein Information

Name	BCHE
Synonyms	CHE1
Function	Esterase with broad substrate specificity. Contributes to the inactivation of the neurotransmitter acetylcholine. Can degrade neurotoxic organophosphate esters.

Cellular Location	Secreted
Tissue Location	Detected in blood plasma (at protein level). Present in most cells except erythrocytes

Background

Mutant proteins of BCHE are responsible for suxamethonium sensitivity. Homozygous persons sustain prolonged apnea after administration of the muscle relaxant suxamethonium in connection with surgical anesthesia. The activity of pseudocholinesterase in the serum is low and its substrate behavior is atypical. In the absence of the relaxant, the homozygote is at no known disadvantage.

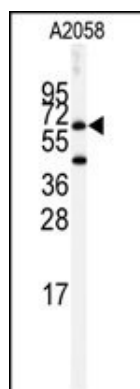
References

Primo-Parmo S.L., Bartels C.F.Am. J. Hum. Genet. 58:52-64(1996)

Primo-Parmo S.L., Lightstone H.Pharmacogenetics 7:27-34(1997)

Yen T., Nightingale B.N.Clin. Chem. 49:1297-1308(2003)

Images



Western blot analysis of anti-BCHE Antibody (Center)(Cat.#AP7829c) in A2058 cell line lysates (35ug/lane). BCHE (arrow) was detected using the purified Pab.

Please note: All products are 'FOR RESEARCH USE ONLY. NOT FOR USE IN DIAGNOSTIC OR THERAPEUTIC PROCEDURES'.