

Hsp75 Rabbit mAb

Catalog # AP78324

Product Information

| | |
|--------------------------|--|
| Application | WB, IHC-P, IF, ICC |
| Primary Accession | Q12931 |
| Reactivity | Human |
| Host | Rabbit |
| Clonality | Monoclonal Antibody |
| Isotype | IgG |
| Conjugate | Unconjugated |
| Immunogen | A synthesized peptide derived from human TRAP1 |
| Purification | Affinity Purified |
| Calculated MW | 80110 |

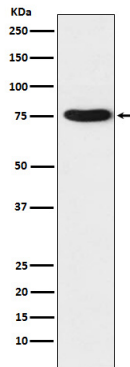
Additional Information

| | |
|--------------------|--|
| Gene ID | 10131 |
| Other Names | TRAP1 |
| Dilution | WB~~1/500-1/1000 IHC-P~~N/A IF~~1:50~200 ICC~~N/A |
| Format | Liquid in 10mM PBS, pH 7.4, 150mM sodium chloride, 0.05% BSA, 0.02% sodium azide and 50% glycerol. |
| Storage | Store at 4°C short term. Aliquot and store at -20°C long term. Avoid freeze/thaw cycles. |

Protein Information

| | |
|--------------------------|---|
| Name | TRAP1 |
| Synonyms | HSP75, HSPC5 {ECO:0000303 PubMed:1866360} |
| Function | Chaperone that expresses an ATPase activity. Involved in maintaining mitochondrial function and polarization, downstream of PINK1 and mitochondrial complex I. Is a negative regulator of mitochondrial respiration able to modulate the balance between oxidative phosphorylation and aerobic glycolysis. The impact of TRAP1 on mitochondrial respiration is probably mediated by modulation of mitochondrial SRC and inhibition of SDHA. |
| Cellular Location | Mitochondrion. Mitochondrion inner membrane Mitochondrion matrix |
| Tissue Location | Found in skeletal muscle, liver, heart, brain, kidney, pancreas, lung, placenta and bladder. Expression is highly reduced in bladder cancer and renal cell carcinoma specimens compared to healthy tissues, but it is increased in other |

Images



Please note: All products are 'FOR RESEARCH USE ONLY. NOT FOR USE IN DIAGNOSTIC OR THERAPEUTIC PROCEDURES'.