

RCC1 Rabbit mAb

Catalog # AP78331

Product Information

Application	WB, IHC-P, IF, FC, ICC, IP
Primary Accession	P18754
Reactivity	Rat, Human, Mouse
Host	Rabbit
Clonality	Monoclonal Antibody
Isotype	IgG
Conjugate	Unconjugated
Immunogen	A synthesized peptide derived from human RCC1
Purification	Affinity Purified
Calculated MW	44969

Additional Information

Gene ID	1104
Other Names	RCC1
Dilution	WB~~1/500-1/1000 IHC-P~~N/A IF~~1:50~200 FC~~1:10~50 ICC~~N/A IP~~N/A
Format	Liquid in 10mM PBS, pH 7.4, 150mM sodium chloride, 0.05% BSA, 0.02% sodium azide and 50% glycerol.
Storage	Store at 4°C short term. Aliquot and store at -20°C long term. Avoid freeze/thaw cycles.

Protein Information

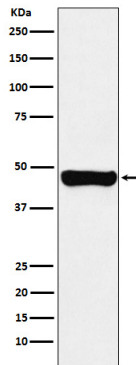
Name	RCC1
Synonyms	CHC1
Function	Guanine-nucleotide releasing factor that promotes the exchange of Ran-bound GDP by GTP, and thereby plays an important role in RAN-mediated functions in nuclear import and mitosis (PubMed: 11336674 , PubMed: 17435751 , PubMed: 1944575 , PubMed: 20668449 , PubMed: 22215983 , PubMed: 29042532). Contributes to the generation of high levels of chromosome-associated, GTP-bound RAN, which is important for mitotic spindle assembly and normal progress through mitosis (PubMed: 12194828 , PubMed: 17435751 , PubMed: 22215983). Via its role in maintaining high levels of GTP-bound RAN in the nucleus, contributes to the release of cargo proteins from importins after nuclear import (PubMed: 22215983). Involved in the regulation of onset of chromosome condensation in the S phase

(PubMed:[3678831](#)). Binds both to the nucleosomes and double-stranded DNA (PubMed:[17435751](#), PubMed:[18762580](#)).

Cellular Location

Nucleus. Chromosome. Cytoplasm Note=Predominantly nuclear in interphase cells (PubMed:12194828). Binds to mitotic chromosomes (PubMed:12194828, PubMed:17435751, PubMed:20668449).

Images



Please note: All products are 'FOR RESEARCH USE ONLY. NOT FOR USE IN DIAGNOSTIC OR THERAPEUTIC PROCEDURES'.