

# Stanniocalcin 1 Rabbit mAb

Catalog # AP78351

## Product Information

---

<b>Application</b>	WB, IP
<b>Primary Accession</b>	<a href="#">P52823</a>
<b>Reactivity</b>	Human
<b>Host</b>	Rabbit
<b>Clonality</b>	Monoclonal Antibody
<b>Isotype</b>	IgG
<b>Conjugate</b>	Unconjugated
<b>Immunogen</b>	A synthesized peptide derived from human STC1
<b>Purification</b>	Affinity Purified
<b>Calculated MW</b>	27621

## Additional Information

---

<b>Gene ID</b>	6781
<b>Other Names</b>	STC1
<b>Dilution</b>	WB~~1/500-1/1000 IP~~N/A
<b>Format</b>	Liquid in 10mM PBS, pH 7.4, 150mM sodium chloride, 0.05% BSA, 0.02% sodium azide and 50% glycerol.
<b>Storage</b>	Store at 4°C short term. Aliquot and store at -20°C long term. Avoid freeze/thaw cycles.

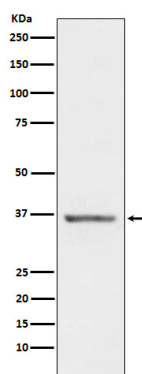
## Protein Information

---

<b>Name</b>	STC1
<b>Synonyms</b>	STC
<b>Function</b>	Stimulates renal phosphate reabsorption, and could therefore prevent hypercalcemia.
<b>Cellular Location</b>	Secreted.
<b>Tissue Location</b>	Expressed in most tissues, with the highest levels in ovary, prostate, heart, kidney and thyroid. In the kidney, expression is confined to the nephron, specifically in the distal convoluted tubule and in the collecting tubule. Not detected in the brain, liver, spleen, peripheral blood leukocytes and adrenal medulla

## Images

---



Please note: All products are 'FOR RESEARCH USE ONLY. NOT FOR USE IN DIAGNOSTIC OR THERAPEUTIC PROCEDURES'.