

Phospholipase C beta 3 Rabbit mAb

Catalog # AP78353

Product Information

Application	WB, IHC-P
Primary Accession	Q01970
Reactivity	Human
Host	Rabbit
Clonality	Monoclonal Antibody
Isotype	IgG
Conjugate	Unconjugated
Immunogen	A synthesized peptide derived from human PLCB3
Purification	Affinity Purified
Calculated MW	138799

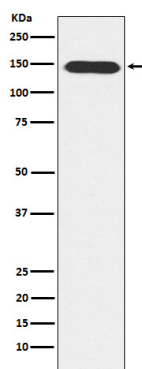
Additional Information

Gene ID	5331
Other Names	PLCB3
Dilution	WB~~1/500-1/1000 IHC-P~~N/A
Format	Liquid in 10mM PBS, pH 7.4, 150mM sodium chloride, 0.05% BSA, 0.02% sodium azide and 50% glycerol.
Storage	Store at 4°C short term. Aliquot and store at -20°C long term. Avoid freeze/thaw cycles.

Protein Information

Name	PLCB3 {ECO:0000303 PubMed:20966218, ECO:0000312 EMBL:AAA77683.1}
Function	Catalyzes the production of the second messenger molecules diacylglycerol (DAG) and inositol 1,4,5-trisphosphate (IP3) (PubMed: 20966218 , PubMed: 29122926 , PubMed: 37991948 , PubMed: 9188725). Key transducer of G protein-coupled receptor signaling: activated by G(q)/G(11) G alpha proteins downstream of G protein-coupled receptors activation (PubMed: 20966218 , PubMed: 37991948). In neutrophils, participates in a phospholipase C-activating N-formyl peptide-activated GPCR (G protein-coupled receptor) signaling pathway by promoting RASGRP4 activation by DAG, to promote neutrophil functional responses (By similarity).
Cellular Location	Cytoplasm. Membrane {ECO:0000250 UniProtKB:Q99JE6}. Nucleus {ECO:0000250 UniProtKB:P51432} Note=And particulate fractions. {ECO:0000250 UniProtKB:Q99JE6}

Images



Please note: All products are 'FOR RESEARCH USE ONLY. NOT FOR USE IN DIAGNOSTIC OR THERAPEUTIC PROCEDURES'.