

RYK Rabbit mAb

Catalog # AP78359

Product Information

Application	WB, IHC-P, IF, FC, ICC, IP
Primary Accession	P34925
Reactivity	Human
Host	Rabbit
Clonality	Monoclonal Antibody
Isotype	IgG
Conjugate	Unconjugated
Immunogen	A synthesized peptide derived from human RYK
Purification	Affinity Purified
Calculated MW	67815

Additional Information

Gene ID	6259
Other Names	RYK
Dilution	WB~~1/500-1/1000 IHC-P~~N/A IF~~1:50~200 FC~~1:10~50 ICC~~N/A IP~~N/A
Format	Liquid in 10mM PBS, pH 7.4, 150mM sodium chloride, 0.05% BSA, 0.02% sodium azide and 50% glycerol.
Storage	Store at 4°C short term. Aliquot and store at -20°C long term. Avoid freeze/thaw cycles.

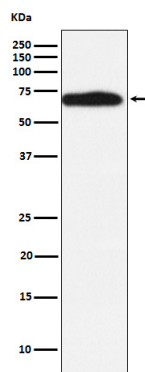
Protein Information

Name	RYK (HGNC:10481)
Synonyms	JTK5A
Function	May be a coreceptor along with FZD8 of Wnt proteins, such as WNT1, WNT3, WNT3A and WNT5A. Involved in neuron differentiation, axon guidance, corpus callosum establishment and neurite outgrowth. In response to WNT3 stimulation, receptor C-terminal cleavage occurs in its transmembrane region and allows the C-terminal intracellular product to translocate from the cytoplasm to the nucleus where it plays a crucial role in neuronal development.
Cellular Location	Membrane; Single-pass type I membrane protein. Nucleus. Cytoplasm. Note=In cells that have undergone neuronal differentiation, the C-terminal cleaved part is translocated from the cytoplasm to the nucleus.

Tissue Location

Observed in all the tissues examined.

Images



Please note: All products are 'FOR RESEARCH USE ONLY. NOT FOR USE IN DIAGNOSTIC OR THERAPEUTIC PROCEDURES'.