

HIRA Rabbit mAb

Catalog # AP78399

Product Information

Application	WB, IF, FC, ICC, IP
Primary Accession	P54198
Reactivity	Human
Host	Rabbit
Clonality	Monoclonal Antibody
Isotype	IgG
Conjugate	Unconjugated
Immunogen	A synthesized peptide derived from human HIRA
Purification	Affinity Purified
Calculated MW	111835

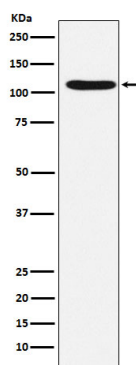
Additional Information

Gene ID	7290
Other Names	HIRA
Dilution	WB~~1/500-1/1000 IF~~1:50~200 FC~~1:10~50 ICC~~N/A IP~~N/A
Format	Liquid in 10mM PBS, pH 7.4, 150mM sodium chloride, 0.05% BSA, 0.02% sodium azide and 50% glycerol.
Storage	Store at 4°C short term. Aliquot and store at -20°C long term. Avoid freeze/thaw cycles.

Protein Information

Name	HIRA
Synonyms	DGCR1, HIR, TUPLE1
Function	Cooperates with ASF1A to promote replication-independent chromatin assembly. Required for the periodic repression of histone gene transcription during the cell cycle. Required for the formation of senescence-associated heterochromatin foci (SAHF) and efficient senescence-associated cell cycle exit.
Cellular Location	Nucleus. Nucleus, PML body. Note=Primarily, though not exclusively, localized to the nucleus. Localizes to PML bodies immediately prior to onset of senescence
Tissue Location	Expressed at high levels in kidney, pancreas and skeletal muscle and at lower levels in brain, heart, liver, lung, and placenta.

Images



Please note: All products are 'FOR RESEARCH USE ONLY. NOT FOR USE IN DIAGNOSTIC OR THERAPEUTIC PROCEDURES'.