

PI 3 Kinase p150 Rabbit mAb

Catalog # AP78416

Product Information

Application	WB, IHC-P, IF, FC, ICC
Primary Accession	Q99570
Reactivity	Rat, Human, Mouse
Host	Rabbit
Clonality	Monoclonal Antibody
Isotype	IgG
Conjugate	Unconjugated
Immunogen	A synthesized peptide derived from human PI 3 Kinase R4
Purification	Affinity Purified
Calculated MW	153103

Additional Information

Gene ID	30849
Other Names	PIK3R4
Dilution	WB~~1/500-1/1000 IHC-P~~N/A IF~~1:50~200 FC~~1:10~50 ICC~~N/A
Format	Liquid in 10mM PBS, pH 7.4, 150mM sodium chloride, 0.05% BSA, 0.02% sodium azide and 50% glycerol.
Storage	Store at 4°C short term. Aliquot and store at -20°C long term. Avoid freeze/thaw cycles.

Protein Information

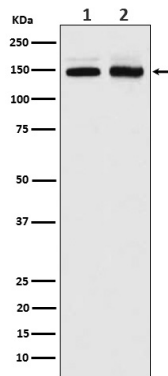
Name	PIK3R4
Synonyms	VPS15 {ECO:0000303 PubMed:23878393}
Function	Regulatory subunit of the PI3K complex that mediates formation of phosphatidylinositol 3-phosphate; different complex forms are believed to play a role in multiple membrane trafficking pathways: PI3KC3-C1 is involved in initiation of autophagosomes and PI3KC3-C2 in maturation of autophagosomes and endocytosis. Involved in regulation of degradative endocytic trafficking and cytokinesis, probably in the context of PI3KC3-C2 (PubMed: 20643123).
Cellular Location	Late endosome. Cytoplasmic vesicle, autophagosome. Membrane; Lipid-anchor. Note=As component of the PI3K complex I localized to pre-autophagosome structures. As component of the PI3K complex II localized predominantly to endosomes. Localizes also to discrete punctae

along the ciliary axoneme (By similarity) {ECO:0000250|UniProtKB:Q8VD65,
ECO:0000305}

Tissue Location

Ubiquitously expressed.

Images



Please note: All products are 'FOR RESEARCH USE ONLY. NOT FOR USE IN DIAGNOSTIC OR THERAPEUTIC PROCEDURES'.