

# Phospholipase A2 Activator Protein Rabbit mAb

Catalog # AP78423

## Product Information

---

<b>Application</b>	WB, IHC-P, IF, ICC, IP
<b>Primary Accession</b>	<a href="#">Q9Y263</a>
<b>Reactivity</b>	Human
<b>Host</b>	Rabbit
<b>Clonality</b>	Monoclonal Antibody
<b>Isotype</b>	IgG
<b>Conjugate</b>	Unconjugated
<b>Immunogen</b>	A synthesized peptide derived from human PLAP
<b>Purification</b>	Affinity Purified
<b>Calculated MW</b>	87157

## Additional Information

---

<b>Gene ID</b>	9373
<b>Other Names</b>	PLAA
<b>Dilution</b>	WB~~1/500-1/1000 IHC-P~~N/A IF~~1:50~200 ICC~~N/A IP~~N/A
<b>Format</b>	Liquid in 10mM PBS, pH 7.4, 150mM sodium chloride, 0.05% BSA, 0.02% sodium azide and 50% glycerol.
<b>Storage</b>	Store at 4°C short term. Aliquot and store at -20°C long term. Avoid freeze/thaw cycles.

## Protein Information

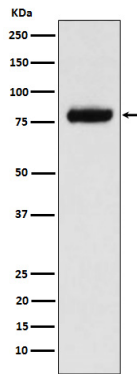
---

<b>Name</b>	PLAA
<b>Synonyms</b>	PLAP
<b>Function</b>	Plays a role in protein ubiquitination, sorting and degradation through its association with VCP (PubMed: <a href="#">27753622</a> ). Involved in ubiquitin-mediated membrane proteins trafficking to late endosomes in an ESCRT-dependent manner, and hence plays a role in synaptic vesicle recycling (By similarity). May play a role in macroautophagy, regulating for instance the clearance of damaged lysosomes (PubMed: <a href="#">27753622</a> ). Plays a role in cerebellar Purkinje cell development (By similarity). Positively regulates cytosolic and calcium-independent phospholipase A2 activities in a tumor necrosis factor alpha (TNF)- or lipopolysaccharide (LPS)-dependent manner, and hence prostaglandin E2 biosynthesis (PubMed: <a href="#">18291623</a> , PubMed: <a href="#">28007986</a> ).
<b>Cellular Location</b>	Nucleus. Cytoplasm. Synapse {ECO:0000250 UniProtKB:P27612}.

Note=Recruited to damaged lysosomes decorated with K48-linked ubiquitin chains

## Images

---



Please note: All products are 'FOR RESEARCH USE ONLY. NOT FOR USE IN DIAGNOSTIC OR THERAPEUTIC PROCEDURES'.