

HLA F Rabbit mAb

Catalog # AP78428

Product Information

Application	WB, IHC-P
Primary Accession	P30511
Reactivity	Human
Host	Rabbit
Clonality	Monoclonal Antibody
Isotype	IgG
Conjugate	Unconjugated
Immunogen	A synthesized peptide derived from human HLA F
Purification	Affinity Purified
Calculated MW	39062

Additional Information

Gene ID	3134
Other Names	HLA-F
Dilution	WB~~1/500-1/1000 IHC-P~~N/A
Format	Liquid in 10mM PBS, pH 7.4, 150mM sodium chloride, 0.05% BSA, 0.02% sodium azide and 50% glycerol.
Storage	Store at 4°C short term. Aliquot and store at -20°C long term. Avoid freeze/thaw cycles.

Protein Information

Name	HLAF
Function	<p>Non-classical major histocompatibility class Ib molecule postulated to play a role in immune surveillance, immune tolerance and inflammation. Functions in two forms, as a heterotrimeric complex with B2M/beta-2 microglobulin and a peptide (peptide-bound HLA-F-B2M) and as an open conformer (OC) devoid of peptide and B2M (peptide-free OC). In complex with B2M, presents non-canonical self-peptides carrying post- translational modifications, particularly phosphorylated self-peptides. Peptide-bound HLA-F-B2M acts as a ligand for LILRB1 inhibitory receptor, a major player in maternal-fetal tolerance. Peptide-free OC acts as a ligand for KIR3DS1 and KIR3DL2 receptors (PubMed:28636952). Upon interaction with activating KIR3DS1 receptor on NK cells, triggers NK cell degranulation and anti-viral cytokine production (PubMed:27455421). Through interaction with KIR3DL2 receptor, inhibits NK and T cell effector functions (PubMed:24018270). May interact with other MHC class I OCs to cross-present exogenous viral, tumor or minor</p>

histocompatibility antigens to cytotoxic CD8+ T cells, triggering effector and memory responses (PubMed:[23851683](#)). May play a role in inflammatory responses in the peripheral nervous system. Through interaction with KIR3DL2, may protect motor neurons from astrocyte- induced toxicity (PubMed:[26928464](#)).

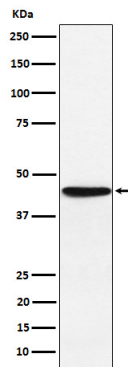
Cellular Location

Cell membrane; Single-pass type I membrane protein. Early endosome membrane. Lysosome membrane. Note=For cross-presentation transits from the cell surface through endosomal pathway to lysosomes, where the peptide is generated from internalized exogenous antigen

Tissue Location

Expressed in resting B cells (at protein level). Expressed in secondary lymphoid organs rich in B and T cells such as the tonsils, spleen, and thymus (at protein level) (PubMed:10605026, PubMed:11169396). Expressed in the endothelial cells of the tonsils (PubMed:11169396). Expressed on activated lymphoid cells including B cells, NK cells, CD4+ T cells and memory T cells (at protein level) (PubMed:20865824, PubMed:27455421). Expressed in motor neurons of spinal cord (PubMed:26928464).

Images



Please note: All products are 'FOR RESEARCH USE ONLY. NOT FOR USE IN DIAGNOSTIC OR THERAPEUTIC PROCEDURES'.