

Kallikrein 5 Rabbit mAb

Catalog # AP78453

Product Information

Application	WB, IF, FC, ICC
Primary Accession	Q9Y337
Reactivity	Human, Mouse
Host	Rabbit
Clonality	Monoclonal Antibody
Isotype	IgG
Conjugate	Unconjugated
Immunogen	A synthesized peptide derived from human Kallikrein 5
Purification	Affinity Purified
Calculated MW	32020

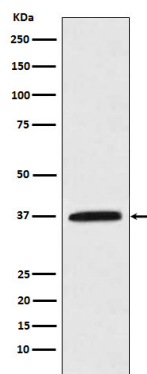
Additional Information

Gene ID	25818
Other Names	KLK5
Dilution	WB~~1/500-1/1000 IF~~1:50~200 FC~~1:10~50 ICC~~N/A
Format	Liquid in 10mM PBS, pH 7.4, 150mM sodium chloride, 0.05% BSA, 0.02% sodium azide and 50% glycerol.
Storage	Store at 4°C short term. Aliquot and store at -20°C long term. Avoid freeze/thaw cycles.

Protein Information

Name	KLK5 (HGNC:6366)
Function	May be involved in desquamation.
Cellular Location	Secreted.
Tissue Location	Expressed in skin, breast, brain and testis. Expressed at the stratum granulosum of palmar skin

Images



Please note: All products are 'FOR RESEARCH USE ONLY. NOT FOR USE IN DIAGNOSTIC OR THERAPEUTIC PROCEDURES'.