

PCBP1 Rabbit mAb

Catalog # AP78476

Product Information

Application	WB, IP
Primary Accession	Q15365
Reactivity	Rat, Human, Mouse
Host	Rabbit
Clonality	Monoclonal Antibody
Isotype	IgG
Conjugate	Unconjugated
Immunogen	A synthesized peptide derived from human PCBP1
Purification	Affinity Purified
Calculated MW	37498

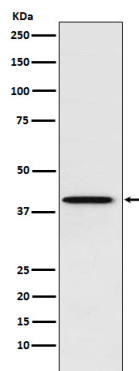
Additional Information

Gene ID	5093
Other Names	PCBP1
Dilution	WB~~1/500-1/1000 IP~~N/A
Format	Liquid in 10mM PBS, pH 7.4, 150mM sodium chloride, 0.05% BSA, 0.02% sodium azide and 50% glycerol.
Storage	Store at 4°C short term. Aliquot and store at -20°C long term. Avoid freeze/thaw cycles.

Protein Information

Name	PCBP1 {ECO:0000303 PubMed:7607214, ECO:0000312 HGNC:HGNC:8647}
Function	Single-stranded nucleic acid binding protein that binds preferentially to oligo dC (PubMed: 15731341 , PubMed: 7556077 , PubMed: 7607214 , PubMed: 8152927). Together with PCBP2, required for erythropoiesis, possibly by regulating mRNA splicing (By similarity).
Cellular Location	Nucleus. Cytoplasm. Note=Loosely bound in the nucleus (PubMed:7607214). May shuttle between the nucleus and the cytoplasm (PubMed:7607214).
Tissue Location	Abundantly expressed in skeletal muscle, thymus and peripheral blood leukocytes while a lower expression is observed in prostate, spleen, testis, ovary, small intestine, heart, liver, adrenal and thyroid glands.

Images



Please note: All products are 'FOR RESEARCH USE ONLY. NOT FOR USE IN DIAGNOSTIC OR THERAPEUTIC PROCEDURES'.