

# KGF Rabbit mAb

Catalog # AP78489

## Product Information

---

<b>Application</b>	WB
<b>Primary Accession</b>	<a href="#">P21781</a>
<b>Reactivity</b>	Rat, Human, Mouse
<b>Host</b>	Rabbit
<b>Clonality</b>	Monoclonal Antibody
<b>Isotype</b>	IgG
<b>Conjugate</b>	Unconjugated
<b>Immunogen</b>	A synthesized peptide derived from human KGF
<b>Purification</b>	Affinity Purified
<b>Calculated MW</b>	22509

## Additional Information

---

<b>Gene ID</b>	2252
<b>Other Names</b>	FGF7
<b>Dilution</b>	WB~~1/500-1/1000
<b>Format</b>	Liquid in 10mM PBS, pH 7.4, 150mM sodium chloride, 0.05% BSA, 0.02% sodium azide and 50% glycerol.
<b>Storage</b>	Store at 4°C short term. Aliquot and store at -20°C long term. Avoid freeze/thaw cycles.

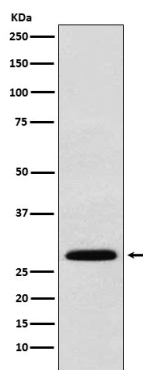
## Protein Information

---

<b>Name</b>	FGF7
<b>Synonyms</b>	KGF
<b>Function</b>	Plays an important role in the regulation of embryonic development, cell proliferation and cell differentiation. Required for normal branching morphogenesis. Growth factor active on keratinocytes. Possible major paracrine effector of normal epithelial cell proliferation.
<b>Cellular Location</b>	Secreted.
<b>Tissue Location</b>	Epithelial cell.

## Images

---



Please note: All products are 'FOR RESEARCH USE ONLY. NOT FOR USE IN DIAGNOSTIC OR THERAPEUTIC PROCEDURES'.