

PDE2A Rabbit mAb

Catalog # AP78503

Product Information

Application	WB
Primary Accession	O00408
Reactivity	Rat, Human, Mouse
Host	Rabbit
Clonality	Monoclonal Antibody
Isotype	IgG
Conjugate	Unconjugated
Immunogen	A synthesized peptide derived from human PDE2A
Purification	Affinity Purified
Calculated MW	105717

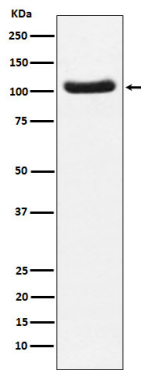
Additional Information

Gene ID	5138
Other Names	PDE2A
Dilution	WB~~1/500-1/1000
Format	Liquid in 10mM PBS, pH 7.4, 150mM sodium chloride, 0.05% BSA, 0.02% sodium azide and 50% glycerol.
Storage	Store at 4°C short term. Aliquot and store at -20°C long term. Avoid freeze/thaw cycles.

Protein Information

Name	PDE2A (HGNC:8777)
Function	cGMP-activated cyclic nucleotide phosphodiesterase with a dual-specificity for the second messengers cAMP and cGMP, which are key regulators of many important physiological processes (PubMed: 15938621 , PubMed: 29392776 , PubMed: 9210593). Has a higher efficiency with cGMP compared to cAMP (PubMed: 15938621). Plays a role in cell growth and migration (PubMed: 24705027).
Cellular Location	[Isoform PDE2A3]: Cell membrane; Lipid- anchor [Isoform PDE2A1]: Cytoplasm
Tissue Location	Widely expressed (PubMed:29392776, PubMed:9210593). Expressed in brain, with high expression observed in the corpus striatum (PubMed:29392776). Also expressed in heart, placenta, lung, skeletal muscle, kidney and pancreas (PubMed:29392776, PubMed:9210593)

Images



Please note: All products are 'FOR RESEARCH USE ONLY. NOT FOR USE IN DIAGNOSTIC OR THERAPEUTIC PROCEDURES'.