

# gamma Adaptin Rabbit mAb

Catalog # AP78505

## Product Information

---

<b>Application</b>	WB, IHC-P
<b>Primary Accession</b>	<a href="#">O43747</a>
<b>Reactivity</b>	Rat, Human, Mouse
<b>Host</b>	Rabbit
<b>Clonality</b>	Monoclonal Antibody
<b>Isotype</b>	IgG
<b>Conjugate</b>	Unconjugated
<b>Immunogen</b>	A synthesized peptide derived from human AP1G1
<b>Purification</b>	Affinity Purified
<b>Calculated MW</b>	91351

## Additional Information

---

<b>Gene ID</b>	164
<b>Other Names</b>	AP1G1
<b>Dilution</b>	WB~~1/500-1/1000 IHC-P~~N/A
<b>Format</b>	Liquid in 10mM PBS, pH 7.4, 150mM sodium chloride, 0.05% BSA, 0.02% sodium azide and 50% glycerol.
<b>Storage</b>	Store at 4°C short term. Aliquot and store at -20°C long term. Avoid freeze/thaw cycles.

## Protein Information

---

<b>Name</b>	AP1G1
<b>Synonyms</b>	ADTG, CLAPG1
<b>Function</b>	Subunit of clathrin-associated adaptor protein complex 1 that plays a role in protein sorting in the late-Golgi/trans-Golgi network (TGN) and/or endosomes. The AP complexes mediate both the recruitment of clathrin to membranes and the recognition of sorting signals within the cytosolic tails of transmembrane cargo molecules. In association with AFTPH/aftiphilin in the aftiphilin/p200/gamma-synergic complex, involved in the trafficking of transferrin from early to recycling endosomes, and the membrane trafficking of furin and the lysosomal enzyme cathepsin D between the trans-Golgi network (TGN) and endosomes (PubMed: <a href="#">15758025</a> ).
<b>Cellular Location</b>	Golgi apparatus. Cytoplasmic vesicle, clathrin-coated vesicle membrane; Peripheral membrane protein; Cytoplasmic side. Cytoplasm Cytoplasm,

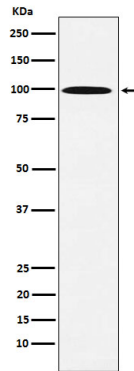
perinuclear region. Cytoplasmic vesicle, clathrin-coated vesicle. Membrane, clathrin-coated pit. Note=Component of the coat surrounding the cytoplasmic face of coated vesicles located at the Golgi complex (PubMed:12773381). Co-localizes with AFTPH/aftiphilin in the cytoplasm (PubMed:15758025).

**Tissue Location**

Widely expressed.

## Images

---



Please note: All products are 'FOR RESEARCH USE ONLY. NOT FOR USE IN DIAGNOSTIC OR THERAPEUTIC PROCEDURES'.