

Nucleoporin p62 Rabbit mAb

Catalog # AP78506

Product Information

Application	WB
Primary Accession	P37198
Reactivity	Human
Host	Rabbit
Clonality	Monoclonal Antibody
Isotype	IgG
Conjugate	Unconjugated
Immunogen	A synthesized peptide derived from human NUP62
Purification	Affinity Purified
Calculated MW	53255

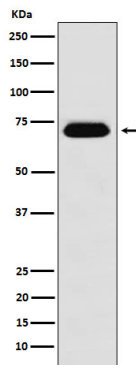
Additional Information

Gene ID	23636
Other Names	NUP62
Dilution	WB~~1/500-1/1000
Format	Liquid in 10mM PBS, pH 7.4, 150mM sodium chloride, 0.05% BSA, 0.02% sodium azide and 50% glycerol.
Storage	Store at 4°C short term. Aliquot and store at -20°C long term. Avoid freeze/thaw cycles.

Protein Information

Name	NUP62
Function	Essential component of the nuclear pore complex (PubMed: 1915414). The N-terminal is probably involved in nucleocytoplasmic transport (PubMed: 1915414). The C-terminal is involved in protein-protein interaction probably via coiled-coil formation, promotes its association with centrosomes and may function in anchorage of p62 to the pore complex (PubMed: 1915414 , PubMed: 24107630). Plays a role in mitotic cell cycle progression by regulating centrosome segregation, centriole maturation and spindle orientation (PubMed: 24107630). It might be involved in protein recruitment to the centrosome after nuclear breakdown (PubMed: 24107630).
Cellular Location	Nucleus, nuclear pore complex. Cytoplasm, cytoskeleton, spindle pole. Nucleus envelope. Cytoplasm, cytoskeleton, microtubule organizing center, centrosome. Note=Central region of the nuclear pore, within the transporter (PubMed:1915414). During mitotic cell division, it associates with the poles of

Images



Please note: All products are 'FOR RESEARCH USE ONLY. NOT FOR USE IN DIAGNOSTIC OR THERAPEUTIC PROCEDURES'.